

## *Ectopic Cilia – A Rare Anomaly*

\*Dr Madhu Kant, Senior Registrar (Ophthalmology)

Central Hospital, Ndola, Zambia.

Dr Dubey, M.K., Consultant Pathologist,

University Teaching Hospital, Lusaka, Zambia.

\*Address for reprint requests:— Postal address: P.O. Box 72980, Ndola, Zambia.

### INTRODUCTION

Ectopic cilia, a rare disorder (Duke Elder 1964) of congenital positional anomaly of one or more hair follicles, where lashes may grow outwards from skin or conjunctiva. We report such a case arising from the bulber conjunctiva.

### CASE REPORT

A six month old baby attended the eye department of the Central Hospital, Ndola. The mother complained of an eye lash appearing at an abnormal position in the right eye. (Fig. No.1).

Histology of the section showed normal conjunctival tissue with a hair like cilia (having cortex and medulla) arising from a hair follicle from the sub-epithelial tissue. The cortex of the cilia was darkly pigmented. (Fig. No.2).

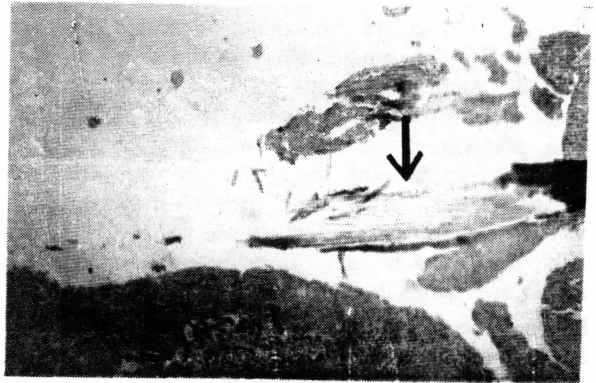
### COMMENT

In most of the cases reported, ectopic cilia grew from skin of upper lid (Duke-Elder 1964) or from middle of the conjunctival surface of the upper tarsus (Dalglais 1966 and Owen 1968). The present case differs from these as the ectopic cilia was present on the bulber conjunctiva at an abnormal site, hitherto unreported anomaly. The phenomenon is another illustration of the relationship between *meibomian* gland and the cilia.

### REFERENCES

- Delgleish, R., (1966): *British Journal of Ophthalmology*, 50, 592.
- Duke-Elder, S., (1964): "System of Ophthalmology", Kimpton, London, Vol.3, Part II, Page: 876.
- Owen, R.A., (1968): *British Journal of Ophthalmology*, 52, 280.
- Scott, O.L.S., (1953): "In clinical genetics". A Sorsby Butter Worth, London, page 220.
- Travolara, L., (1959): *Boll Oculist*, 38,194 cited by R. Delgleish, *British Journal of Ophthalmology* (1966), 50,592.

Weigman, E., (1936): *Klin Mbl. Accgen Heilk* 96, 230, cited by Delgleish, B.J.O. (1966) 50,592.



*Photomicrograph of the conjunctival tissue, removed from the patient. The cilia is seen projecting from the surface with hair follicle like structure in the sub epithelial tissue. H & E Staining. X28.*