

7

211
241

THE UNIVERSITY OF ZAMBIA
UNIVERSITY EXAMINATIONS – 2000
SECOND SEMESTER EXAMINATIONS
SCHOOL OF ADULT EDUCATION

1. AE 112 Adult Education in Zambia
2. AE 142 Evaluating Adult Education Programmes.
3. AE 152 Methods and Technique in Adult Education.
4. AE 211 Administration in Adult Education
5. AE 212 Managing Adult Education
6. AE 222 Statistics
7. AE 231 Community Development
8. AE 232 Dynamics of Educational Change
9. AE 241 Popular Education
10. AE 242 Mass Education and Development

THE UNIVERSITY OF ZAMBIA

UNIVERSITY SECOND SEMESTER EXAMINATIONS, MAY 2000

AE 112

ADULT EDUCATION IN ZAMBIA

TIME: THREE (3) HOURS

INSTRUCTION:

ANSWER TWO QUESTIONS FROM EACH SECTION.

SECTION A

1. Provide a comprehensive examination of circumstances which explain poor quality education offered by village schools.
2. Why was Latham Hailed as the father of education in Northern Rhodesia.
3. How do you explain the resistance of missionary societies, the settler community and the colonial government in Northern Rhodesia to the introduction of secondary education in the country.

SECTION B

4. Itemize and discuss Kaunda's dilemmas which shaped the direction of education in the First Republic.
5. Paulo Freire, the Brazilian Educationist/Philosopher, maintains that education is not neutral for it either supports the establishment or the poor. Using this strand, critically assess whether or not the education principles in the Second Republic favoured the poor.
6. What advantages do NGOs have over government in the provision of Adult Education in the country.

End of Examination

THE UNIVERSITY OF ZAMBIA

UNIVERSITY SECOND SEMESTER EXAMINATIONS - MAY, 2000

AE 142

EVALUATING ADULT EDUCATION PROGRAMMES

TIME: THREE (3) HOURS

INSTRUCTIONS:

ANSWER FOUR QUESTIONS

1. Define the term stakeholder. Describe the categories of stakeholders in evaluation and explain why it is necessary to involve them in evaluation.
2. With examples define the following:
 - (a) Goal based evaluation
 - (b) External evaluation
 - (c) Goal free evaluation
 - (d) Diagnostic evaluation
3. Discuss the CIPP model of evaluation and explain its weaknesses and merits?
4. "Many educational programmes are rarely evaluated" why should this be happening?
5. Define the following terms associated with evaluation:
 - (a) Measurement
 - (b) Accountability
 - (c) Testing
 - (d) Accreditation
 - (e) Audit
 - (f) Assessment
6. You have been asked to give a talk to your members of staff who are learning how write evaluation reports. Describe what you would include in your talk on writing evaluation reports.

7. Identify and describe criteria for judging the quality of an evaluation.
8. Describe the aspects of an adult education programme that can be evaluated.

End of Examination

THE UNIVERSITY OF ZAMBIA

UNIVERSITY SECOND SEMESTER EXAMINATIONS, MAY 2000

AE 152

METHODS AND TECHNIQUE IN ADULT EDUCATION

TIME: THREE (3) HOURS

INSTRUCTION:

ANSWER QUESTION ONE FROM SECTION A AND ANY THREE FROM SECTION B

SECTION A

1. There are three methods in Adult Education name them. How can the University of Zambia use them to reach adult learners.

SECTION B

2. Lecture Technique is one of the oldest techniques in adult education. How can you use it in extension work and what are the advantages and disadvantages of using this technique.
3. Among the techniques you have learnt choose three of them and explain how you can use them at your place of work.
4. Demonstration is divided into two, discuss the application in adult education.
5. There are several teaching aids that can be used in adult education and extension work, choose three of them and explain their usefulness/effectiveness.
6. When you are preparing a lesson plan, what key factors do you take into consideration?

End of Examination

THE UNIVERSITY OF ZAMBIA

UNIVERSITY SECOND SEMESTER EXAMINATIONS - MAY, 2000

AE 212

MANAGING ADULT EDUCATION

TIME: THREE (3) HOURS

INSTRUCTIONS:

ANSWER FOUR (4) QUESTIONS WITH AT LEAST 2 FROM EACH SECTION

SECTION A

1. Define and describe planning as a management function. Why should managers be involved in planning?
2. What is meant by the concept “change?” Explain why employees normally resist change and what techniques managers can use to reduce resistance?
3. What are the causes of conflict? How can managers stimulate functional conflict?
4. Describe the hierarchy of needs motivation theory. What can managers learn from it?
5. When two groups are in conflict in an organisation, certain changes take place between and within the groups. Identify the changes that will take place: (a) between the groups and (b) within the groups.
6. “Leaders are born and not made.” To what extent do you agree with this statement?

SECTION B

7. What is decision-making and what is the relationship to problem solving?
8. Which are the major steps in decision making and how can you apply them in your work place?
9. What are the channels of communication and how can you apply them in your work place.

10. There are many barriers to communication. Cite them and indicate how you can overcome them.
11. Mention four inventions which can be said to have promoted communication and how they have assisted the communication process.

End of Examination

**THE UNIVERSITY OF ZAMBIA
SCHOOL OF EDUCATION**

**UNIVERSITY SECOND SEMESTER DEFERRED/SUPPLEMENTARY
EXAMINATIONS - 2000**

DISTANCE EDUCATION

AE 221

RESEARCH METHODS IN ADULT EDUCATION

TIME: THREE HOURS

INSTRUCTIONS

Answer three questions only

1. Discuss the difference between:
 - a) Statement of the problem
 - b) Purpose of the study
2. Data analysis plays a very important part in research. Discuss.
3. Discuss the components of methodology:
 - a) Population
 - b) Sample population
 - c) Instruments
 - d) Research design
4. Distinguish between objectives and assumptions.
5. What part does lecture play in research project.

End of Examination

THE UNIVERSITY OF ZAMBIA

UNIVERSITY SECOND SEMESTER EXAMINATIONS, MAY 2000

AE 222

STATISTICS IN ADULT EDUCATION

TIME: THREE (3) HOURS

INSTRUCTION:

QUESTION 1 IS COMPULSORY AND THEN CHOOSE ANY 3 FROM THE GIVEN QUESTIONS. YOU ARE REQUIRED TO ANSWER FOUR (4) IN TOTAL.

QUESTION 1

The following set of data (in ages) represents for 24 registrants for the annual conference.

16	16	17F	17	18	19F
20	20	21	21	23F	24
25F	25	26	26F	27	27
30	33	36F	44	48	50

- (a) Construct a stem and leaf display of the data.
- (b) Display your data on a relative frequency distribution table.
- (c) Construct a histogram
- (d) Calculate the mean of the data. Find the mean on the horizontal axis of the histogram and mark it with a vertical line.
- (e) Calculate the standard deviation of the data.
- (f) Calculate the percentage of female students.
- (h) Discuss the data.

QUESTION 2

Which of the averages will be most suitable in the following conditions and why?

- (a) Average size of ready made garments.

- (b) Average production per shift in a factory.
- (c) Average intelligence of students in a class.
- (d) Per capita consumption of food in a family consisting of children, women and men.

QUESTION 3

Define measurement. Discuss the four levels of measurement that are used to convert concepts into variables. Indicate the type of measurement scale used in each of the following cases:

- (a) The pressure in Kg/cm² of car tyres.
- (b) Brand of a tooth paste.
- (c) A subject’s response to a scaled multiple choice question.
- (d) The reaction time of a driver to take off when the robot light turns green.

QUESTION 4

Define and discuss the term “correlation.”

The following table shows how 10 students, arranged in alphabetical order, were ranked according to their achievements in both laboratory and lecture portions of a biology course. Find the coefficient of rank order correlation:

Laboratory	8	3	9	2	7	10	4	6	1	5
Lecture	9	5	10	1	8	7	3	4	2	6

What is the main difference between Pearson’s Correlation Coefficient and Spearman’s?

QUESTION 5

Write short notes on the following

- (a) Data
- (b) Population
- (c) Sample
- (d) Inference

(e) Variable

QUESTION 6

A lecturer was interested in examining the relationship between the number of books read on a certain topic (Variable X) and the number of correctly answered questions related to this topic (Variable Y). The data collected on 5 randomly chosen students are:

X: 6 4 7 2 1
Y: 8 7 4 2 4

Determine the regression equation and the value of Y for X = 5.

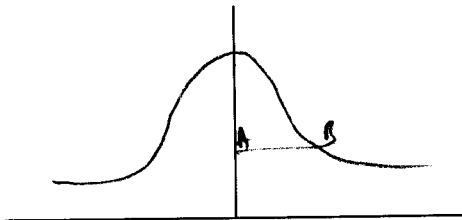
$$\text{Given } b = \frac{N(\sum XY - (\sum X)(\sum Y))}{N\sum X^2 - (\sum X)^2}$$

$$a = \bar{Y} - b\bar{X}$$

QUESTION 7

This is a distribution of data.

- (a) What is it called?
- (b) Mark in the position of the mean
- (c) What is the length of AB called (B is a point of inflection)
- (d) Discuss the distribution.
- (e) When would you use a frequency polygon to present data?



QUESTION 8

- (a) What is Null hypothesis?
- (b) What is Alternative hypothesis?
- (c) How do the stated hypotheses differ from each other? Give ~~n~~ examples.

End of Examination

THE UNIVERSITY OF ZAMBIA

**UNIVERSITY SECOND SEMESTER EXAMINATION (DISTANCE
EDUCATION) - 2000**

AE 231

COMMUNITY DEVELOPMENT

TIME: THREE HOURS

INSTRUCTIONS

Answer only three questions

1. Discuss the responsibility of the change agent to the community and give examples.
2. Give details between client and client system in a community.
3. There are two types of change agents. Discuss and give examples.
4. Making a Diagnostic inventory to you client. Discuss.
5. Discuss briefly seven major purposes for resource acquisition.
6. Discuss in details six important considerations in insuring continuance of the project.

End of Examination

THE UNIVERSITY OF ZAMBIA
UNIVERSITY SECOND SEMESTER EXAMINATION (DISTANCE
EDUCATION) - 2000

AE 232

DYNAMICS OF EDUCATIONAL CHANGE

TIME: THREE HOURS

INSTRUCTIONS

Answer only three questions

1. What is meant by target group in a community. Discuss and give examples.
2. Discuss strategies of changes and give examples.
3. Discuss changes in power that hinders relationships and performance.
4. Discuss in details short and long term goals in a project.
5. What is meant by open and closed relationship of the community.

End of Examination

THE UNIVERSITY OF ZAMBIA
UNIVERSITY SECOND SEMESTER EXAMINATIONS, MAY 2000

AE 242

MASS EDUCATION AND DEVELOPMENT

TIME: THREE (3) HOURS

INSTRUCTION:

ANSWER ONLY FOUR (4) QUESTION

1. Discuss the main causes of the debt crisis.
2. What is political will and why is it important in a mass campaign.
3. How has the West imposed the structural adjustment programme on underdeveloped countries?
4. What would you consider as important factors in the designing and implementing of a mass education campaign.
5. Identify and discuss areas of convergence between colonialism and the trickle - down approach to development.

End of Examination