

THE UNIVERSITY OF ZAMBIA  
SCHOOL OF HUMANITIES AND SOCIAL SCIENCES  
DEPARTMENT OF PSYCHOLOGY  
2019/2020 ACADEMIC YEAR FINAL EXAMINATIONS  
PSG 1110: INTRODUCTION TO PSYCHOLOGY

Time : 3 hours

Date : 31<sup>st</sup> December 2020

COMPUTER NUMBER \_\_\_\_\_

---

**SECTION A: MULTIPLE CHOICE QUESTIONS**

**INSTRUCTIONS: Answer all questions by circling the correct answer**

1. The word Psychology comes from Greek psyche which translates to \_\_\_\_\_.
  - a) soul
  - b) human
  - c) mind
  - d) behaviour
  
2. Common sense and psychological knowledge \_\_\_\_\_.
  - a) are never the same
  - b) maybe the same but may be quite different
  - c) are always the same
  - d) cannot be compared since common sense cannot be proven
  
3. Of the following studies, which one meets the definition of Psychology?
  - a) A study of someone who engages in self- injurious behavior.
  - b) A study examining the components of personality.
  - c) A study of the effects of peer pressure on adolescents.
  - d) All of the above.

4. Who is the pioneer that proposed the 16 basic dimensions of normal personality and devised a questionnaire (16PF) to measure them?
- Carl Jung
  - Raymond Cattell
  - Julian Rotter
  - Gordon Allport
5. Personality is thought to be \_\_\_\_\_.
- short term and easily changed
  - a pattern of short-term characteristics
  - unstable and short term
  - long term, stable and not easily changed
6. \_\_\_\_\_ is credited with the first comprehensive theory of personality.
- Wundt
  - Gall
  - Hippocrates
  - Freud
7. An early science that tried to correlate personality with measurement of parts of a person's skull is known as \_\_\_\_\_.
- personality psychology
  - phrenology
  - physiology
  - psychology
8. The id is driven primarily by the impulse to seek pleasure and avoid pain, known as the \_\_\_\_\_.
- pain principle
  - here and now principle
  - reality principle
  - pleasure principle
9. The correct order of the stages of psychosexual development is \_\_\_\_\_.
- anal, oral, genital, latency, phallic
  - phallic, oral, genital, anal, latency
  - oral, anal, genital, latency, phallic
  - oral, anal, phallic, latency, genital

10. According to Freud, what is the part of the personality that compels people to act in a perfect manner in accordance with moral ideals?
- a) The id
  - b) The superego
  - c) The pleasure principle
  - d) The reality principle
11. One trait that dominates a personality so much that it influences nearly everything a person does is a \_\_\_\_\_.
- a) global Trait
  - b) cardinal Trait
  - c) specific trait
  - d) central Trait
12. Attributing one's own unacceptable thoughts or feelings to someone else is called what?
- a) Reaction formation
  - b) Projection
  - c) Displacement
  - d) Sublimation
13. The "Big Five" personality dimensions that make up the five-factor model can be expressed in this acronym.
- a) ocean
  - b) cease
  - c) intro
  - d) extra
14. Which of the following is not used to define abnormal behavior?
- a) Deviation from the statistical norm
  - b) Deviation from the sexual norm
  - c) Deviation from the social norm
  - d) Maladaptive behavior
15. The Binet-Simon scale expressed a child's score in terms of \_\_\_\_\_.
- a) Chronological age
  - b) IQ age
  - c) Physical age
  - d) Mental age

16. The scientific study of abnormal behavior in an effort to describe, predict, explain and change abnormal patterns of functioning is \_\_\_\_\_.
- a) Abnormal Psychology
  - b) Abnormal behaviour
  - c) Maladaptive behaviour
  - d) Bizzier behaviour
17. Which criterion defines abnormal behaviour as “a clinically significant behavioural or psychological syndrome or pattern that occurs in an individual and that is associated with present distress?”
- a) Dysfunction
  - b) Practical criterion
  - c) DSM V criterion
  - d) ‘Integrated criterion
18. An era that emphasized supernatural and demonology in explaining abnormal behavior was \_\_\_\_\_.
- a) Greco-Roman Thought
  - b) Prehistoric and Ancient Era
  - c) Naturalistic explanation
  - d) Medieval era
19. The development of language relativism is accredited to \_\_\_\_\_.
- a) Edward Sapir
  - b) The Dan people of Papua New Guinea
  - c) Benjamin Whorf
  - d) Dr Sichimba
20. The first black person obtained a PhD in psychology in the year \_\_\_\_\_.
- a) 1930
  - b) 1940
  - c) 1920
  - d) 1910
21. Nationalism works to support \_\_\_\_\_.
- a) common liberties
  - b) ethical communities
  - c) distributive justice
  - d) Both A and C

22. Girls' peer groups tend to be mostly \_\_\_\_\_.
- a) knit
  - b) egalitarian
  - c) attitudinal
  - d) Both A and B
23. Language generativity refers to \_\_\_\_\_.
- a) accounts for the communication of meaning
  - b) accounts for the capacity to communicate about matters that are not in the here-and-now
  - c) accounts for the capacity to use a limited number of words to produce an infinite variety of expressions
  - d) Both B and C
24. Language is referred as a guide to \_\_\_\_\_.
- a) personal discovery
  - b) social reality
  - c) social processes
  - d) real world
25. The theory of optimal psychology in black psychology was pioneered by \_\_\_\_\_.
- a) Linda James Myers
  - b) Mamie Clark
  - c) Cecil Summer
  - d) McShane Berry
26. Major methodological issues observed in studying black people included all except \_\_\_\_\_.
- a) historical practices
  - b) lack of longitudinal studies
  - c) oversampling low income families
  - d) lack of adequate families to participate
27. Age-grade system in African practices is an example of \_\_\_\_\_.
- a) apprenticeship
  - b) social governance
  - c) family structure
  - d) Both A and B

28. The primordialistic view of identity entails that \_\_\_\_\_.
- a) identity is static
  - b) identity is flexible
  - c) identity is sentimental
  - d) identity is manipulative
29. \_\_\_\_\_ is defined as the difference between the smallest and the greatest values of items in a distribution.
- a) The range
  - b) The mean
  - c) The mean deviation
  - d) Third quartile
30. The \_\_\_\_\_ measures the relationship between two variables.
- a) correlation
  - b) standard deviation
  - c) variance
  - d) mean
31. A PSG 1110 student would be more likely to find a negative correlation between \_\_\_\_\_ and \_\_\_\_\_.
- a) shyness, party attendance
  - b) hopelessness, depression
  - c) job success, self-esteem
  - d) confidence, public speaking
32. Which of these correlations is strongest?
- a) 0.75
  - b) - 0.35
  - c) + 0.10
  - d) + 0.50

32. Which of the following is a physiological cause of bulimia?
- (a) Hypothalamus disorder
  - (b) Lowered levels of neurotransmitter
  - (c) Genetic factors
  - (d) All the above
33. Self actualisation refers to \_\_\_\_\_.
- (a) feel secure, to seek pleasure and avoid pain
  - (b) affiliate with others, be accepted
  - (c) achieve, be competent
  - (d) find self-fulfillment and realize one's potential
34. Which of The following is NOT an external factor influencing hunger?
- (a) Sight of food
  - (b) Glucose
  - (c) Time of the day
  - (d) Culture
35. \_\_\_\_\_ is an example of intrinsic motivation.
- (a) working for salary
  - (b) doing work for housing allowance
  - (c) doing work for personal satisfaction
  - (d) all of the above

36. Which of the following is NOT a symptom of Anorexia Nervosa?

- (a) self- starvation
- (b) depression
- (c) impulsive behavior
- (d) socially withdrawn

37. Cognitive component of emotion includes \_\_\_\_\_.

- (a) subjective feelings and evaluations
- (b) interpretation of situation and cognitive appraisal
- (c) thoughts, beliefs and expectations
- (d) all the above

38. Schacter and Singer's experiment supported \_\_\_\_\_.

- (a) physiological component of emotion
- (b) cognitive component of emotion
- (c) behavioral component of emotion
- (d) all of the above

39. Which measure is NOT used by a polygraph?

- (a) Blood Pressure
- (b) Body temperature
- (c) Galvanic Skin Response
- (d) EEG

40. Which of the following is a behavioural component of emotion?

- (a) thought
- (b) heart rate
- (c) Smile
- (d) none of the above

41. Autonomous Nervous System \_\_\_\_\_.

- (a) contains nerves from heart to organs in the body
- (b) controls only strong emotions
- (c) has 3 sub divisions
- (d) is associated with release of epinephrine

42. Memories of historical facts are to \_\_\_\_\_ memory, as memories of your breakfast this morning are to \_\_\_\_\_ memory.

- a) episodic; procedural
- b) procedural; semantic
- c) semantic; episodic
- d) long-term; short-term

43. Context dependent memory suggests that you would do best on your psychology test if you could be tested \_\_\_\_\_.

- a) in the lecture theater where your lectures were held
- b) with a large group of psychology majors
- c) with students who share your interests
- d) with essay-type questions

44. Things that are heard are held as a brief \_\_\_\_\_ in the sensory register.

- a) echo
- b) icon
- c) image
- d) engram

45. Which of the following determines what information moves from sensory memory to short-term memory?
- a) consolidation
  - b) an engram
  - c) working memory
  - d) selective attention

**SECTION B: FILL IN THE BLANKS      Answer all questions**

1. In girls, the phallic stage in Freud's theory of psychosexual development is characterized by a conflict called \_\_\_\_\_.
2. An UNZA student who is angry at her lecturer for a low grade lashes out at her roommate who is a safer target of her anger is an example of which defense mechanism?  
\_\_\_\_\_
3. According to Allport, \_\_\_\_\_ traits are the major characteristics of an individual and usually number between 5-10 traits.
4. A child who is fixated at the anal stage because they received too harsh toilet training is likely to develop what Freud called \_\_\_\_\_, which is characterized by being too stubborn, orderly and stingy.
5. According to Freud, the \_\_\_\_\_ is the "executive" part of personality, which operates under the reality principle.
6. Psychological markers are carried on through the process of \_\_\_\_\_
7. The belief that one's own culture is superior than others is \_\_\_\_\_
8. Boys' peer groups tend to be more \_\_\_\_\_
9. Language-relativism assumes that language determines \_\_\_\_\_
10. List any 2 levels of self-identity
  - a. \_\_\_\_\_
  - b. \_\_\_\_\_
11. \_\_\_\_\_ is the categorization that mentally organizes experience with, and guides behavior toward a particular group of people.

12. List two agents of socialization
- a. \_\_\_\_\_
  - b. \_\_\_\_\_
13. After Binet's death in 1911 Lewis Terman and his colleagues at \_\_\_\_\_ University made major revisions to the Binet-Simon scale
14. According to Freud, unacceptable urges and desires are kept in our unconscious through a process called \_\_\_\_\_
15. Freud's theory states that the level of awareness which is just below the surface and can easily be retrieved is called the \_\_\_\_\_
16. A person is described as 'moody' and 'hostile'. In Big Five terms, they might be characterized as \_\_\_\_\_
17. A religious or spiritual practice of evicting demons or other spiritual entities from a person, through prayer is called \_\_\_\_\_
18. A scholar who believed that mental disorders had natural causes was \_\_\_\_\_
19. The \_\_\_\_\_ Ages is associated with reversion to supernatural beliefs and explanation of abnormal behavior.
20. \_\_\_\_\_ are factors that perpetuate a cycle or continued presence of mental illness or abnormal behavior.
21. Jay Z, Beyonce, Pompi, Macky 2, Chanda na K, Micheal Jackson can be said to possess \_\_\_\_\_ Intelligence.
22. \_\_\_\_\_ defines abnormality as a significant deviation from the average/majority.
23. \_\_\_\_\_ stresses the importance of attaining some positive goal or ideal such as self-actualization, competence and autonomy.
24. \_\_\_\_\_ is drilling a hole and removing part of a skull.
25. Behavioral models focus on the role of \_\_\_\_\_ in abnormal behaviour.
26. Biological models is to organic causes as Cognitive models is to \_\_\_\_\_

27. Sensation requires the process of \_\_\_\_\_ to change physical energy to neural energy.
28. Through the process of \_\_\_\_\_ humans and animals select and interpret sensory input so that it acquires meaning.
29. Of the 5 sense organs, the \_\_\_\_\_ pick more sensory information for interpretation.
30. Mercy wakes up at night and switches on the light. Few seconds later power goes off (load shedding). At first, she can hardly see anything and then after a few seconds she is able to see but not clearly. This is an example of sensory \_\_\_\_\_.
31. Dr. Hapunda wants to conduct an experiment of sensory threshold in first year psychology students. He is particularly interested in detecting a taste threshold of the students. As part of the experiments, he instructs students not to eat or drink anything 2 hours before the experiment. Dr. Hapunda is controlling for \_\_\_\_\_ so as to remove sense experience that occurs after a stimulus.
32. One of the functions of \_\_\_\_\_ is to provide signals that help us identify and classify things.
33. \_\_\_\_\_ is an example of a natural pain-relieving substance in a human body.
34. According to research, which gender shows higher sensitivity to pain? \_\_\_\_\_
35. Which "other sense" explains why some people experience motion sickness on an aeroplane? \_\_\_\_\_
36. Artificial psychology, a theory by Curtis (1963) states that artificial intelligence will only reach human complexity if it meets how many conditions? \_\_\_\_\_
37. Hierarchy of needs theory was proposed by \_\_\_\_\_
38. It is logical to assume that both heredity and the \_\_\_\_\_ play a role in intelligence of an individual.
39. All living organisms have \_\_\_\_\_ or \_\_\_\_\_ needs that must be met in order to survive.

40. \_\_\_\_\_ theory proposes that people are motivated to engage in certain behaviour because of genetic programming.
41. Hunger motivation is influenced by \_\_\_\_\_ and \_\_\_\_\_ factors.
42. The act of remembering PSG 1110 material accurately during the examination requires successful completion of encoding, \_\_\_\_\_, and retrieving of information.
43. As Mercy learns the new concepts in PSG 1110, she tries as much as possible to connect and integrate the new concepts with existing information in memory. This illustrates a process known as \_\_\_\_\_.

### SECTION C: TRUE OR FALSE

Answer all questions by ticking T for True and F for False

	Statement	T	F
1	18 months to 3 years, pleasure from the bowel and constraints of toilet training → Freud Anal Stage		
2	According to the psychoanalytic theory, current thoughts and attention are said to be in your Conscious Mind.		
3	Gordon Allport believed that traits determine and cause behavior.		
4	Creating false but plausible excuses to justify unacceptable preference to watch TV instead of studying is a good example of Rationalization.		
5	Denial is the kind of defense mechanism in which one transforms repressed motives or feelings into more socially accepted forms.		
6	Freud suggested that slips of the tongue are sexual or aggressive urges, accidentally slipping out of our unconscious.		
7	Maintenance rehearsal is an inefficient way to transfer information from short-term memory into long-term memory.		
8	Our long-term memory is superior in both duration and storage capacity among the three stages of memory.		
9	The phonological loop is the working memory component which is active when you listen to spoken words or recite some information.		
10	To answer the multiple choice questions in this examination, you are using recognition as a way of retrieving information from your long-term memory.		

11	The degree to which numerical data tend to spread around the mean is called variability or dispersion.		
12	The range calculates the difference between two middle observations.		
13	The variance is the square root of the standard deviation.		
14	The greater the standard deviation the lesser the magnitude of the values from the mean.		
15	In a correlation, the direction i.e. negative or positive affects the size of the relationship.		
16	Bulimics are sometimes overweight.		
17	The level of glucose in the body determines hunger.		
18	In a classic study by Schachter and Singer (1962), participants were given shots of norepinephrine and told it was 'vitamin'		
19	The lateral hypothalamus stimulates eating.		
20	Individuals with Anorexia Nervosa are motivated to seek treatment.		
21	In Milgram's study of obedience, although most participants dissented and complained, the majority did not disobey behaviourally.		
22	Research suggests attitudes are very good predictors of behavior.		
23	Some of the pre-conditions to the social phenomenon of groupthink include cohesiveness, strong leadership as well as pressure for conformity and harmony.		
24	According to research on helping behavior, the best predictor of bystander intervention is an individual's belief in Christian values.		
25	Walking past Mwanawasa hostels, you see one of the rooms catching fire, but you decide not to report the matter to the Dean of students as you believe that other students, no doubt, have already rushed to report or will do so sooner than later. This illustrates the social phenomenon of bystander effect.		

### SECTION C: SHORT ESSAYS: CHOOSE ANY FOUR

Write short explanatory notes on 4 of the following.

1. Briefly describe Stanley Milgram's classic study of human obedience
2. Explain what you understand by the concept of bystander effect and outline the factors that have been suggested for its occurrence.
3. Discuss characteristics of individuals with high Need for Achievement
4. Practical definition of abnormal behavior
5. Write short notes on capacity and duration of short-term memory.

6. Briefly discuss the decay theory for forgetting.
7. Briefly discuss the characteristics of black men and women as perceived during the times of promoting of black psychology.

**SECTION D: QUANTITATIVE SKILLS**

**Answer all questions**

Chilufya and Mazuba wrote a very long PSG 1110 test which had several sections. In preparing for the test, they studied together and spent the same amount of time to prepare. Below are the scores they obtained on each section of test. Each section was out of 15. Referring to these scores, answer the questions below

Section	Scores	
	Chilufya	Mazuba
1	7	3
2	2	4
3	4	6
4	6	2
5	3	8
6	9	8
7	12	9
8	1	10
9	9	15
10	7	2

- a) Find the average performance for both Chilufya and Mazuba
- b) What was the variance for Chilufya?
- c) What was the standard deviation for Mazuba?
- d) What was the relationship (correlation) between the two students' performances?

**END OF EXAMINATION**

**THE UNIVERSITY OF ZAMBIA  
SCHOOL OF HUMANITIES AND SOCIAL SCIENCES  
DEPARTMENT OF PSYCHOLOGY  
PSG 2110- NEUROPSYCHOLOGY**

**DATE: DECEMBER 15<sup>th</sup>, 2020**

**DURATION: 3 HOURS (Afternoon session)**

**INSTRUCTIONS:**

- Answer a total of **FOUR** questions from section **A**
- Answer a total of **TWO** questions from section **B**
- Write your computer number on the provided answer booklet.
- Use legible handwriting.
- Make sure your question paper has 2 printed pages.

**All the best!**

## **SECTION A- SHORT ESSAYS (5 marks each)**

### **Part I -SELECT ANY 2 QUESTIONS**

1. What is the distinction between the localization and equipotential theories of understanding the brain?
2. Elaborate on the various aspects associated with the study of cognition in neuropsychology.
3. Explain in clear terms how attention occurs and mention the brain regions associated with the cognitive system.
4. Clearly explain the different ways in which communication occurs in the Central Nervous System occurs.

### **Part II- SELECT ANY 2 QUESTIONS**

1. What are the common deficits among children on Autism Spectrum of Disorders (ASD)?
2. What are some of the cognitive and behavioural problems associated with Epilepsy among children?
3. Discuss some of the issues surrounding mild head injuries (concussion).
4. What are some of the essential sources of information when carrying out neuropsychological assessments?

## **SECTION B-LONG ESSAYS (10 marks each)**

### **Part I- SELECT ONE QUESTION**

1. Outline some of the major specializations of neuropsychology and then elaborate on some of the typical cases that each specialized (in a given) field would handle.
2. Explain the structure of the cerebral cortex (its hemispheres and lobes) and the function of each area of the cortex.

### **Part II- SELECT ONE QUESTION**

1. What are brain tumours? Discuss the various ways types of brain tumours and ways in which they are treated.
2. What are the neurocognitive effects of Cerebral Malaria? What is the role of a neuropsychologist in the management of cerebral malaria?



**THE UNIVERSITY OF ZAMBIA  
SCHOOL OF HUMANITIES AND SOCIAL SCIENCES**

**DEPARTMENT OF PSYCHOLOGY**

**PSG 2110- BASIC STRUCTURES AND PROCESSES THEORY AND APPLICATION**

**DATE: DECEMBER 15<sup>th</sup>, 2020**

**DURATION: 3 HOURS (Morning session)**

**INSTRUCTIONS:**

- Answer all questions from section **A** and **B** on this question paper.
- Use the provided answer booklet to answer section **C** and **D**.
- Write your computer number on both the question paper and answer booklet.
- Fasten the question paper and answer booklet(s) together before the end of the examination.
- Use legible handwriting.
- Make sure your question paper has 6 printed pages.

**All the best!**

**COMPUTER NUMBER:** \_\_\_\_\_

**SECTION A: Multiple choice questions: circle the best possible answer**

1. Human receptors are classified into the types:
  - a) sensory and motor receptors
  - b) photoreceptors, mechanoreceptors, chemoreceptors, and thermoreceptors
  - c) Pacinian, Meissner, and Ruffini receptors
  - d) central, peripheral and sympathetic receptors
  
2. sense of knowing the position of the limbs is called \_\_\_\_\_.
  - a) proprioception
  - b) adaptation
  - c) vestibular
  - d) isolation
  
3. Taste and smell are called the \_\_\_\_\_ senses.
  - a) somatic
  - b) vestibular
  - c) chemical
  - d) mechanical
  
4. The types of tastes are \_\_\_\_\_.
  - a) hot, bland, sweet and sour
  - b) gradations between sweet and bitter
  - c) bitter, sour, sweet and salty
  - d) all actually types of smell
  
5. In sight, a nerve impulse travels from the \_\_\_\_\_.
  - a) ganglionic cells to bipolar cells to rods and cones
  - b) rods and cones to bipolar cells to ganglionic cells
  - c) bipolar cells to rods and cones to ganglionic cells
  - d) rods and cones to ganglionic cells to bipolar cells
  
6. Your ability to focus on a TV show while ignoring the noise of your partner nagging about supper illustrates:
  - a) subliminal processing
  - b) selective attention
  - c) sensory attention
  - d) sensory adaptation
  
7. The middle ear contains three little bones. They are:
  - a) pinna, cochlea, cilia
  - b) incus, anvil, stapes
  - c) hammer, anvil, stirrup
  - d) tympani, ossicle, pinna

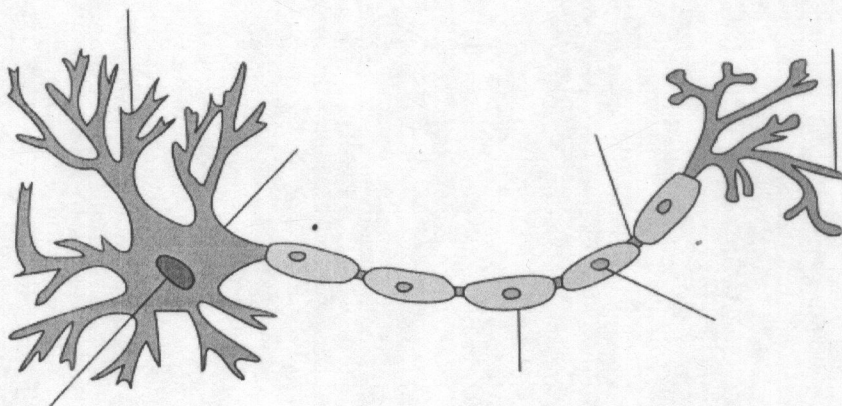
8. Damage to your olfactory membrane would most likely impair your ability to:
- See
  - hear
  - smell
  - feel pain
9. A researcher interested in the relationship between physical stimuli and our psychological experience would be studying:
- extra sensory perception
  - proprioception
  - auditory realism
  - psychophysics
10. Wave \_\_\_\_\_ is to pitch as wave \_\_\_\_\_ is to loudness.
- length, frequency
  - peak, trough
  - pressure, distinctiveness
  - frequency, amplitude
11. The \_\_\_\_\_ are the photoreceptors that respond well in low light, and to motion, but are not specialized for detailed vision.
- Rods
  - Cones
  - ganglions
  - bipolar cells
12. Which of the following is NOT considered an altered state of consciousness?
- Dreaming
  - divided attention
  - Hypnosis
  - meditation
13. Morphine is one of the most powerful and effective members of this class of drugs. .
- Alkaloids
  - Stimulants
  - NSAIDs
  - Narcotics
14. Which part of the neuron is the site of neurotransmitter release?
- cell body
  - axon
  - dendrite
  - Terminal

15. The main point of focus in a visual display is known as the \_\_\_\_\_.
- a) Perceptual set
  - b) Figure
  - c) Closure
  - d) Ground
16. If Molly has intrinsic motivation to go for a jog every evening, she is most likely to jog for which reason?
- a) She likes the way she feels when she jogs
  - b) She wants to please her boyfriend by losing some weight
  - c) She wants other people to admire her for jogging
  - d) All of the above
17. Maslow's theory is based on the premise that human beings are motivated by needs that are
- a) Hierarchically ranked.
  - b) Influenced by the unconscious
  - c) Influenced by passed experiences
  - d) None of the above
18. Short term memory has a limited capacity to hold about \_\_\_\_\_
- a)  $7 \pm 2$  items
  - b)  $10 \pm 2$  items
  - c)  $5 \pm 2$  items
  - d)  $3 \pm 2$  items
19. A factory worker is paid K500 every time he assembles 10 pairs of shoes. This type of reinforcement represents an example of \_\_\_\_\_.
- a. intermittent reinforcement
  - b. a fixed ratio schedule
  - c. a variable ratio schedule
  - d. a fixed interval schedule.

20. At the beginning of a new year you might keep writing the previous years on documents this is a typical example of \_\_\_\_\_
- a) Retroactive interference
  - b) Proactive interference
  - c) Decay
  - d) Tip of the tongue phenomenon

**SECTION B: Fill-in the blank spaces with the correct answer.**

- 1. What is the other term for difference threshold? \_\_\_\_\_
  - 2. The movement of hair in the \_\_\_\_\_ of the ear triggers nerve impulses which are sent to the brain for interpretation.
  - 3. Gaps between the myelin sheath along an axon are called \_\_\_\_\_
  - 4. The mental predisposition to perceive one thing and not another regardless of the sensory experience is as a result of what psychologist refer to as \_\_\_\_\_
  - 5. The theory of hearing that emphasizes on how the speed at which vibrations move is called the \_\_\_\_\_
  - 6. \_\_\_\_\_ cues are said to provide information on the location of sound on a horizontal axis.
- 7-13. Clearly label the parts of the neuron in the diagram below.



14. \_\_\_\_\_ is our ability to have subjective awareness of ourselves and our environment.
15. \_\_\_\_\_ are the waves associated with daydreaming and activities that require internal focus such as meditation.
16. Chileshe is learning a new yoga pose. The \_\_\_\_\_ theory of learning suggests that the best way to learn the pose is to observe experts in yoga and practice.
17. \_\_\_\_\_ is the kind of encoding that requires one to store information based its basic meaning.
18. In general, babbling begins at about \_\_\_\_\_ months of age.
19. Sally is pursuing an engineering career because she believes it brings in a high income. It is possible to conclude that Sally is \_\_\_\_\_ motivated.
20. In classical conditioning, a baby crying in response to pain is an example of \_\_\_\_\_

**SECTION C: Short essay questions select one question from EACH PART**

**PART I answer one question:**

1. Write a short essay explaining any four types of sleep disorders. (5 marks)
2. Explain what is meant when an Individual diagnosed with substance use disorder is said to have a psychological dependence on a particular drug. (5 marks)

**PART II answer one question:**

1. Briefly discuss Triesman's theory of attention? (5 marks)
2. Discuss the types of reinforcement schedules used in operant conditioning. (5 marks)

**SECTION D: long essays answer BOTH questions**

1. Clearly explain how an action potential occurs.
2. Describe the working model of memory. In what ways has this model enhanced our understanding of memory. Discuss.

**End of examination**

**THE UNIVERSITY OF ZAMBIA  
SCHOOL OF HUMANITIES AND SOCIAL SCIENCES  
DEPARTMENT OF PSYCHOLOGY**

**Course:** PSG 2210 - Foundations of Research Methods  
**Date:** 13<sup>th</sup> November, 2019  
**Time:** 09-12 Hours  
**Venue:** G7

**Instruction:** This examination has two Parts (A and B). Each part has different sections with instructions. Please read each section's instructions **CAREFULLY**. All **ANSWERS** to be written in the ANSWER Booklet

---

**PART A: PART A CONTAINS 4 SECTIONS. ANSWER ALL SECTIONS IN ONE ANSWER BOOKLET.**

**Section 1: Multiple Choices – Answer all questions in this section**

1. Leary (2004) observed that paranoia, suspiciousness and limited intelligence may distort a participant's responses in a study. These characteristics are illustrative of .....
  - A. Transient factors that may contribute to measurement error
  - B. Clinical factors that may contribute to measurement error
  - C. Non-pathological factors that may contribute to measurement error
  - D. Pathological factors that may contribute to measurement error
  - E. None of these
  
2. Measurement procedures only provide imperfect measures of a constructs under research. To get around this problem, researchers tend to use .....
  - A. Measurement fixation
  - B. Analysis
  - C. triangulation
  - D. All the above
  
3. One of the purposes of assigning numbers to participants' responses is:
  - A. To discriminate participant responses
  - B. To harmonize participant responses
  - C. To normalize participant responses
  - D. To analyze participant responses

4. .... refers to the consistence or dependability of a measuring technique
- A. validity
  - B. reliability
  - C. measurability
  - D. All the above.
5. To estimate reliability, we can use ..... reliability
- A. Inter-item reliability
  - B. Multi-item reliability
  - C. Mono or single item reliability
  - D. None of the above
6. .... refers to the extent to which a measure appears to measure what it is suppose to measure
- A. Face validity
  - B. Construct validity
  - C. Compliance validity
  - D. Criterion related validity
7. .... Involves the judgment of the test administrator
- A. Face validity
  - B. Construct validity
  - C. Compliance validity
  - D. Criterion related validity
8. A possible reason a psychometrician may design measures that lack face validity may be
- A. If they think that respondents will need debriefing
  - B. If they think that the study is basically unethical
  - C. If they think that respondents might hesitate answering sensitive questions
  - D. If they think that respondents are too familiar with the construct under research
9. All behavioural research involves the measurement of some ..... responses
- A. Clinical
  - B. Pathological
  - C. Development
  - D. Cognitive
10. When different measures provide the same results, it means there is
- A. Zero confidence in their validity
  - B. 100% validity confidence in their validity
  - C. Low confidence in their validity
  - D. High confidence in their validity

**Section 2: Fill in the blank spaces – Answer all questions in this section**

1. To some extent, data dictates the \_\_\_\_\_ to be use. For example, historical data can be best obtained from written records than from experimentation.
2. Irrespective of what kind of measure to be used, the goal of \_\_\_\_\_ is to assign numbers to responses of research participants.
3. \_\_\_\_\_ in behavioural research are entities that cannot be directly observed but are inferable on the basis of empirical evidence.
4. Assuming that the characteristic being measured is relatively stable and does not change overtime \_\_\_\_\_ reliability refers to the consistence of participants' responses on a measure over time.
5. All \_\_\_\_\_ in behavioural research contain measurement error.
6. Measures in behavioural studies roughly fall into three categories. Two examples are \_\_\_\_\_ and \_\_\_\_\_
7. \_\_\_\_\_ Scales of measurement has a true zero point. Therefore, it involves real numbers that can be added, subtracted, multiplied and divided.
8. Complete the following equation: \_\_\_\_\_ score = \_\_\_\_\_ Score + measurement error.
9. The kind of scale of measurement in a study determines the kind of \_\_\_\_\_ that can be performed on the research data.
10. The \_\_\_\_\_ scale of measurement is the least informative measurement scale.

**Section 3: Short essay – Answer ONE of the following questions**

1. Briefly discuss the scales of measurements used in behavioural research, and bring out their importance.
2. With at least one example in each case, outline three types of measurements employed in behavioural research.

**Section 4: Long essay – the following question is compulsory.**

1. Demonstrate your understanding of the concept of measurement error and examine any five factors that may contribute to measurement error.

**PART B: PART B CONTAINS 5 SECTIONS. ANSWER ALL SECTIONS S IN ONE ANSWER BOOKLET SEPARATE FROM PART A**

**Section 1: Multiple Choice – Answer all questions in this section**

1. Which of the following is used for qualitative research?
  - a) Unstructured interview
  - b) Focus group
  - c) Both a and b
  - d) None of the above
  
2. Which of the following is not a strength of diaries?
  - a) Diaries minimise the problems of 'recall' because the events are recorded too close to the time they occurred.
  - b) Diaries are useful when data to be collected is of a sensitive nature.
  - c) Diaries are useful when observation is not possible.
  - d) Diaries are useful because accuracy of the data can easily be confirmed.
  
3. The process of deriving a hypothesis from a theory is known as
  - a) induction
  - b) deduction
  - c) both a and b
  - d) None of the above
  
4. Which variable is also known as an outcome variable?
  - a) Dependent variable
  - b) Independent variable
  - c) Control variable
  - d) Confounding variable
  
5. Which of the following methods suffers from attrition?
  - a) Experimental
  - b) Case study
  - c) Naturalistic observation
  - d) None of the above
  
6. CCTV is an example of the \_\_\_\_\_
  - a) Survey method
  - b) Naturalistic method
  - c) Case study
  - d) Longitudinal
  
7. Which of the following methods is used to study relationships between variables?
  - a) Correlation
  - b) Longitudinal
  - c) Survey
  - d) Experimental

8. Which of the following research method is suitable for studying an individual or few people?
  - a) Survey
  - b) Experimental
  - c) Case study
  - d) Cross sectional
9. Which of the following methods is used to study phenomena over a number of years?
  - a) Cross sectional
  - b) Longitudinal
  - c) Survey
  - d) Experimental
10. A correlation coefficient of 0 indicates a
  - a) Zero relationship
  - b) Weak negative correlation
  - c) Weak positive correlation
  - d) Perfect correlation

**Section 2: Fill in the blanks – Answer all questions in this section**

1. \_\_\_\_\_ and \_\_\_\_\_ are two main types of research
2. A \_\_\_\_\_ variable that is not of interest that might have an effect on the experiment is known as a \_\_\_\_\_
3. The method that involves reviewing a variety of existing sources or documents is known as \_\_\_\_\_.
4. \_\_\_\_\_ is a data collection method that measures physical changes over time related to any indicator such as health, nutrition, agriculture, credit etc. using any acceptable measurement unit and procedure.
5. \_\_\_\_\_ is a method that collects data from a population or a representative subset, at one specific point in time.
6. A \_\_\_\_\_ is a predictive statement that is tested using scientific methods.
7. The \_\_\_\_\_ variable is the variable that is manipulated by the researcher and it causes changes in the outcome variable.

8. Mention three (3) criteria that must be met for an investigation to be scientific

- i) \_\_\_\_\_
- ii) \_\_\_\_\_
- iii) \_\_\_\_\_

**Section 3: True or false - Answer all questions in this section by putting a mark (✓) in either the true or false column**

#	QUESTION	TRUE	FALSE
1	A correlation coefficient of -0.85 indicates a weak negative correlation.		
2	The correlational research method can show a cause and effect relationship.		
3	Document review can only be used as a secondary data source.		
4	Diary method and document review are one and the same type of data collection method		
5	Confounding variables are controlled for in the direct observational method.		

**Section 4: Short Essays (5 marks each) – Answer ONE of the following**

1. Write short notes on the criteria of a good theory
2. Define informed consent and bring out at least four properties of a good informed consent.

**Section 5: Statistics – Answer all Questions in this section**

1. Knowing the level of measurement and distributional properties of ones' data is essential to aid statistical decision making for any testing situation. Given the levels of measurement and the class of statistical analysis:
  - a. Complete the following table by indicating specific statistical tests you would use under each level of measurement for the groups of statistical tests:

Level of Measurement/distribution	Description	Correlation	Independent observations of 2 groups	Dependent observation of 2 groups
Nominal	e.g. mode			
Ordinal				
Interval non normal				
Ratio non normal				
Interval normal distribution				
Ratio normal distribution				

- b. Indicate which tests are parametric and which ones are non-parametric
  - c. Estimating the parameter of a population using a sample require careful considerations. List at least 3 things required for a sample to be used to estimate a population parameter
2. Fifty-two (52) road users appearing before the fast track court for road rage recount the number of times road rage made them overspeed and sometimes cause road accidents. A researcher computed a grouped frequency distribution table for the number of times each respondent experienced road rage in the past week. Using the data below calculate the relative frequency for each class interval:

CLASS INTERVAL	FREQUENCY
1-5	21
6-10	19
11-15	9
16-20	3

3. Sample size determination is affected by a number of factors. Below is a table with factors that affect sample size. Indicate the magnitude of the factors and when they influence **large** sample sizes:

Factor	Magnitude / Direction	Required sample size
P Value/Alpha level		
Power		
Effect size		
Alternative hypothesis		

4. After a lecture of personality development, Sitali and Mary argue on whether someone's age is associated with the development of self-worth. Sitali argues that age is not associated with self-worth while Mary argues that the older one gets the more self-worth they have. To settle the score, the two decide to conduct a simple study in which they ask 135 respondents with different ages to answer a self-worth questionnaire with 10 items on a 5-point Likert scale. In the scale, 1 was strongly disagree while 5 was strongly agree to statements such as "I feel that I have a number of good qualities; on the whole, I am satisfied with myself." A higher score means better self-worth.
- Show step by step how Sitali and Mary would compute a variable called Self-Worth (total) in SPSS based on the ten items
  - State the null hypothesis for this study
  - After preliminary analysis, Sitali and Mary settle for Pearson correlation. Interpret the following results while taking into account the null hypothesis

		age	Self Worth (total)
age	Pearson Correlation	1	-.332**
	Sig. (2-tailed)		.000
	N	144	125
Self Worth (total)	Pearson Correlation	-.332**	1
	Sig. (2-tailed)	.000	
	N	125	125

\*\* Correlation is significant at the 0.01 level (2-tailed).

- Using a scatterplot, illustrate how these results would look like
  - Illustrate a scatter plot that has violated the assumption of Homoscedasticity
5. Elizabeth and Kayomba have been approached by the University of Zambia Students Psychology Association to train its membership in behavioural statistics. As deliverable, the association President Musonda asks Elizabeth to demonstrate that their training has had impact on the skills and knowledge of the trainees.

- Explain how Elizabeth and Kayomba would demonstrate the impact of the test?
- State the alternative hypothesis for the task that Kayombo and Elizabeth would have to state to solve the problem
- Elizabeth and Kayomba decide to use a Paired  $t$ -test. What other test of group differences can the two use to explore the problem at hand?
- What are the assumptions of running a paired  $t$ -test?
- Interpret the results below

		Mean	N	Std. Deviation	Std. Error Mean
Pair 1	Total_pretest	37.0000	22	11.24193	2.39679
	Total_posttest	57.8182	22	7.04838	1.50272

		Paired Differences				t	df	Sig. (2-tailed)	
		Mean	Std. Deviation	Std. Error Mean	95% Confidence Interval of the Difference				
					Lower				Upper
Pair 1	Total_pretest - Total_posttest	20.81818	10.80845	2.30437	-25.61038	-16.02599	-9.034	21	.000

- Illustrate graphically how the above results would be presented?
6. The Zambia Police report that the number of suicide cases are on the increase. Most of these cases are purportedly due to psychological issues. The figures in the last 5 years are indicated below:

Year	2015	2016	2017	2018	2019(3 <sup>rd</sup> Q)
# of Cases	21	15	47	63	80

- Name one graph for i) descriptive questions; ii) comparison questions and iii) causal questions
- What graph best suits the data above?
- Using the data above simulate the graph that best suits this data

## All the Best

*“Statistical thinking is as necessary for citizenship as the ability to read and write” - Samuel S. Wilks (1906 - 1964)*

THE UNIVERSITY OF ZAMBIA  
SCHOOL OF HUMANITIES AND SOCIAL SCIENCES  
DEPARTMENT OF PSYCHOLOGY  
2019/2020 ACADEMIC YEAR FINAL EXAMINATIONS

PSG 2210: FOUNDATIONS OF RESEARCH METHODS IN PSYCHOLOGY  
TIME: THREE (3) HOURS

COMPUTER NUMBER \_\_\_\_\_

**INSTRUCTIONS**

1. Answer **all** questions in Section A
2. Answer **both** questions in Section B
3. In Section C answer **two** questions Part I and **one** long essay in Part II

**SECTION A:**

**PART I: MULTIPLE CHOICE QUESTIONS**

Answer all questions in this section on the question paper. Circle the correct answer.

1. Which of the following is not a concern of response set/bias among researchers?
  - a) Affects generalisability of results
  - b) Increases results uncertainty
  - c) Data is no longer normally distributed
  - d) All of the above
2. The number of children each foster parent is taking care of at an institutional care facility is an example of a \_\_\_\_\_.
  - a) categorical variable
  - b) discrete variable
  - c) continuous variable
  - d) None of the above
3. An institutional care facility has 64 mothers who look after 650 institutionalised children. The number of children is an example of a(n) \_\_\_\_\_ scale of measurement.
  - a) nominal
  - b) ordinal
  - c) ratio
  - d) interval

4. When a researcher only has one variable to analyse, the type of analysis the researcher can conduct is known as \_\_\_\_\_ analysis.
- univariate
  - bivariate
  - multivariable
  - longitudinal data
5. Which of the following frequency distributional graphs should be **best** used when a researcher wants to present categorical data in percentage?
- Histogram
  - Pie chart
  - Likegraph
  - Bar graph
6. SPSS does not distinguish two of the following scales of measures and it calls them scale \_\_\_\_\_.
- nominal and ordinal
  - interval and ratio
  - ratio and ordinal
  - ordinal and interval
7. If data is at ratio/interval scale but not normally distributed, which one of the following is the best measure of central tendency to use?
- Mean
  - Median
  - Mode
  - Standard deviation
8. The characteristics of a normally distributed graph are that the mean, mode and median value are the same.
- True
  - False
9. The value of the standard deviation can either be positive or negative.
- True
  - False
10. The p value should always be set at  $\leq 0.05$
- True
  - False
11. Which of the following is NOT one of the key characteristics of a true experiment?
- Holding everything constant apart from the variable being manipulated.
  - All participants experience all experimental conditions.
  - The measurement of changes caused by the manipulation of a variable.
  - The manipulation of a variable.

12. Qualitative research \_\_\_\_\_.
- is suited to richer understanding of ideas
  - isn't concerned with large samples
  - can be combined with quantitative approaches
  - All of the above.
13. What is meant by the term 'grounded theory'?
- As a social researcher, it's important to keep your feet on the ground.
  - Theories should be tested by rigorous scientific experiments.
  - Theories should be grounded in political values and biases.
  - Theoretical ideas and concepts should emerge from the data.
14. The term 'ethnographic' refers to \_\_\_\_\_.
- prejudice about a cultural group
  - studying groups of people in their own cultural setting
  - the realistic nature of qualitative research
  - a drawing style used in research
15. To avoid experimenter bias, when neither the experimenter nor the participant is aware of which group the participant is in, this is known as \_\_\_\_\_.
- random assignment
  - null hypothesis
  - variable manipulation
  - double blind
16. Which of the following would occur in a longitudinal study?
- Participation is expected to last for a minimum of 24 hours.
  - Measures are taken from different participants over an extended period of time.
  - Measures are taken from the same participants on different occasions usually over extended periods of time.
  - Measures are taken from participants in at least six different countries.
17. A researcher is looking at the effect of drinking alcohol on the ability to play darts. Half of the participants drink a pint of beer, while the other half drink a pint of water. All participants throw three darts at a dart board and have the score recorded. How is this experiment best summarised?
- Between-groups design. Independent variable is the amount of alcohol drunk. Dependent variable is the three dart score.
  - Between-groups design. Independent variable is the three dart score. Dependent variable is the amount of alcohol drunk.
  - Within-groups design. Independent variable is the three dart score. Dependent variable is the amount of alcohol drunk.
  - Within-groups design. Independent variable is the amount of alcohol drunk. Dependent variable is the three dart score.

18. Why do you need to review the existing literature?
- To make sure you have a long list of references.
  - Because without it, you could never reach the required word-count.
  - To find out what is already known about your area of interest.
  - To help in your general studying.
19. Risk-benefit analysis involves \_\_\_\_\_.
- checking that any harm which participants may suffer is warranted by the gains in knowledge
  - weighing up the benefits of control and the dangers of artificiality
  - researchers deciding which of a number of experiments will be the most effective
  - participants making a choice over which answer will give them a reward
20. What is meant by the term 'theoretical saturation'?
- Deciding on a theory and then testing it repeatedly.
  - The point at which a concept is so well developed that no further data collection is necessary.
  - Deciding on a sampling strategy early on and pursuing it relentlessly.
  - Sampling units of time rather than individual persons.

## PART II: FILL IN THE BLANKS

Answer all questions in this section by filling in the blank spaces on this paper.

- A \_\_\_\_\_ for the mean is a distribution of all sample means that could be obtained in a sample of a given size from the sample population.
- The discrepancy between the estimate and the true parameter value is known as \_\_\_\_\_.
- \_\_\_\_\_ graph is used by statisticians to estimate a population parameter.
- A \_\_\_\_\_ is anything that can vary, assume number and can be quantified.
- A \_\_\_\_\_ frequency distribution table is used if a researcher has too many possible scores.
- The \_\_\_\_\_ as a measure of central tendency is used to determine the frequency of occurrence of a categorical variable.
- The median of the following numbers 3, 6, 5, 3, 8, 6, 7 is \_\_\_\_\_.
- The \_\_\_\_\_ is a number used to tell how measurements for a group are spread out from the average (mean), or expected value.

9. According to what was covered in this course, step one of hypothesis testing is to state the \_\_\_\_\_.
10. The \_\_\_\_\_ measure the strength or magnitude of change of two or more variables.
11. PSG 2210 students want to conduct a study to describe the proportion of psychology students who experience severe levels of exam anxiety. In this study, the participants complete a single questionnaire measuring exam anxiety at a single point in time. The student researchers are using a \_\_\_\_\_ design.
12. A variable that changes in a systematic way with the independent variable and may also affect the dependent variable is known as a \_\_\_\_\_ variable.
13. The goal of \_\_\_\_\_ research is to provide a snapshot of the current state of affairs.
14. The most common method of creating equivalence among the experimental conditions in an experiment is to use \_\_\_\_\_.
15. Case studies, surveys and naturalistic observation are types of \_\_\_\_\_ research.
16. Researchers use the \_\_\_\_\_ technique to minimise order effects in an experiment .
17. Malambo wants to study how students' lives are affected when they have a paying job. He decides to gather together groups of 8-10 students and engage them in a discussion about their perceptions and experiences with the world of work. Malambo is using \_\_\_\_\_ to gather data.
18. \_\_\_\_\_ research focuses on gathering numerical data and generalising it across groups of people or to explain a particular phenomenon.
19. A research finding indicated that on average, the more alcohol students consume in a week, the lower their grades. This finding is an example of a \_\_\_\_\_ correlation between the two variables.
20. The \_\_\_\_\_ approach to research is associated with the often-cited expression "lived experience".

## SECTION B: STATISTICS

Answer both questions in this section.

1. Of the 20 children living at an institution of care, 8 are showing signs of depression. Concerned with the health quality of life of these 8 children, the institution hires you as Psychology Consultant. The following are the scores of the 8 children on depression which ranges from 1-20 where 20 means highly (clinically) depressed.

Child	score
A	6
B	10
C	15
D	3
E	10
F	5
G	8
H	15

Based on this data

1. Compute the mean, median and mode
  2. Which measure of central tendency is suited for this data and why?
  3. Compute the standard deviation
  4. Write the interpretation of the results based on the mean and standard deviation alone
2. During your consulting period at the institution of care, you also collected data of the children on the following variables: **gender of children, education level (primary to vocational) and their actual age (in years)**. For each of these variables describe step by step how you would enter data in SPSS.

## SECTION C

### PART I: SHORT ESSAYS

Answer any two questions in this section.

1. Suppose a researcher is interested in studying whether exam anxiety decreases as students take more exams. The researcher reasons that the more experience students have, the more familiar the situation becomes, and therefore the anxiety may decrease as a result. He administers a questionnaire to participants to assess exam anxiety at the end of each academic year throughout their undergraduate studies. Hence the researcher has a measure of exam anxiety for each participant at several points in time.
  - a) Identify the research design the researcher is using.
  - b) Briefly discuss the advantages and disadvantages of this design.
  - c) Suggest an alternative design this researcher could use were it not possible to use the design in (a).

2. Briefly describe any two ways survey data is collected, highlighting their advantages and disadvantages.
3. A psychologist wants to investigate whether the amount of alcohol people consume affects their reaction time on a driving simulator. She tests the reaction times of the same participants both after consuming alcohol and when they have no alcohol in their system.
  - a) Identify the design the researcher is using, and identify the independent and dependent variables.
  - b) Briefly discuss the strengths and limitations of this design.
  - c) Suggest an alternative design that would be available to this researcher.

## **PART II: LONG ESSAY**

**Answer the question in a long essay format.**

1. Discuss the key characteristics of qualitative research and describe the grounded theory approach to research, making clear its aim and the process of this type of research.

**END OF EXAMINATION**

**THE UNIVERSITY OF ZAMBIA**  
**SCHOOL OF HUMANITIES AND SOCIAL SCIENCES**  
**DEPARTMENT OF PSYCHOLOGY**  
**2019/2020 ACADEMIC YEAR DEFERRED FINAL EXAMINATIONS**

**PSG 3210: PERSONALITY AND SOCIAL PSYCHOLOGY**

**TIME: THREE (3) HOURS**

**INSTRUCTIONS**

1. Answer **two** questions from each section
2. Answer all questions in essay format
3. Answer Section A and Section B in separate answer books
4. Each question carries 12.5 marks

**SECTION A: Answer two questions**

1. Discuss Freud's Topographical and Structural models of Personality Development. Give relevant examples related to the Zambian context.
2. Explain the PROCESS of personality including Pleasure or Hedonic motives, Growth and Self actualization motives and cognitive motives. Give practical examples.
3. Show how Culture, Social class, Family and Peers contribute to an individual's personality development. Argue with your own examples.

**SECTION B: Answer two questions**

1. Describe Sheriff et. al.'s (1961) Robbers' Cave experiment and explain which theory of prejudice the study supports.
2. Mary and Elizabeth are PSG 3210 students who have completed the Rosenberg self-esteem test as participants in a psychology project. The test scores reveal that Mary has a low self-esteem while Elizabeth has a high self-esteem. With the help of documented evidence, discuss how these different levels of self-esteem would impact these individuals and how the two would use self-handicapping to enhance their self-esteem.
3. Explain the principles underlying compliance according to Cialdini, and identify **one** compliance technique you have used before, explaining how you used it, and on which principle it was based.

**END OF EXAMINATION**

**THE UNIVERSITY OF ZAMBIA**  
**SCHOOL OF HUMANITIES AND SOCIAL SCIENCES**  
**DEPARTMENT OF PSYCHOLOGY**  
**2019/2020 ACADEMIC YEAR FINAL EXAMINATIONS**

**PSG 3210: PERSONALITY AND SOCIAL PSYCHOLOGY**

**TIME: THREE (3) HOURS**

**INSTRUCTIONS**

1. Answer **two** questions from each section
2. Answer all questions in essay format
3. Answer Section A and Section B in separate answer books
4. Each question carries 12.5 marks

**SECTION A: Answer two questions**

1. Discuss Freud's Five Psychosexual stages of Personality Development. Show why each erogenous zone is important and what happens when an individual is fixated at any of the developmental stages. Give your own examples.
2. In the Assessment of Personality discuss Self-Report Inventories as well as Projective Techniques. Give examples of the tests used in each category and how they are applicable to Zambia.
3. Outline Carl Jung's Systems of Personality comprising the Ego, Personal Unconscious and Collective unconscious. Give your own examples of each of the three concepts.

**SECTION B: Answer two questions**

1. Explain how prejudice and discrimination can be reduced according to the **contact hypothesis**, and describe how Aronson applied this technique in the **jigsaw classroom**.
2. Using appropriate research evidence and examples, discuss **four** specific mechanisms of self-enhancement.
3. Describe Solomon Asch's (1951) conformity study, making clear the aim, findings, and conclusions drawn.

**END OF EXAMINATION**

**THE UNIVERSITY OF ZAMBIA**  
**SCHOOL OF HUMANITIES AND SOCIAL SCIENCES**  
**DEPARTMENT OF PSYCHOLOGY**

**2019/2020 ACADEMIC YEAR FINAL EXAMINATION**

**PSG 4110: PSYCHOPATHOLOGY:      TIME: THREE (3) HOURS**

**COMPUTER NUMBER \_\_\_\_\_**

**INSTRUCTIONS: THIS PAPER CONSISTS OF 3 PARTS: 1, 2 AND 3. ANSWER ALL QUESTIONS IN PART 1 (SECTIONS A, B AND C).**

**PART 2 CONSISTS OF SECTION A AND SECTION B. ANSWER ONE QUESTION FROM SECTION A AND ONE QUESTION FROM SECTION B. ANSWER PART 2 IN A SEPARATE BOOKLET.**

**PART 3 CONSISTS OF SECTIONS A AND SECTION B. CHOOSE ONE QUESTION FROM SECTION A. SECTION B IS COMPULSORY. ANSWER THIS PART IN A SEPARATE BOOKLET**

**PART 1: ANSWER ALL THE QUESTIONS IN SECTIONS A, B AND C.**

**SECTION A: MULTIPLE CHOICE QUESTIONS**

**Circle the correct answer. Each question carries ½ mark.**

1. The process by which genes are turned on or off is referred to as:
  - a. Heredity
  - b. Gene expression
  - c. Polygenic
  - d. Gene switching
  
2. Sam and Sally are twins raised by their biological parents. Sam excelled in music and was in the high school band. Sally was the state basketball player on the team. They both received top-notch grades and they both had part-time jobs at Pick and Pay. An example of a shared environment variable would be \_\_\_\_\_ an example of a non-shared environment variable would be \_\_\_\_\_.
  - a. School activities; their parent's relationship
  - b. Band for Sam; Basketball for Sally
  - c. Their parent's relationship; work
  - d. Their parent's relationship; school activities.

3. \_\_\_\_\_ refers to different forms of the same gene;  
\_\_\_\_\_ refers to different genes contributing to a disorder.
- Allele; polygenic
  - Polygenic; allele
  - Allele' polymorphism
  - Polymorphism; allele
4. Which of the following are good uses of case studies (circle all that apply):
- to illustrate a rare disorder or treatment
  - to show that a theory does not fit for everyone
  - to prove a model
  - to show cause and effect
5. Correlational studies involve:
- manipulating the independent variable
  - manipulating the dependent variable
  - manipulating the independent and dependent variable
  - none of the above
6. Incidence refers to:
- the number of people who will develop a disorder during their lifetime
  - the number of people who report a disorder at the time of an interview
  - the number of people who develop a disorder during a given time period
  - none of the above
7. A \_\_\_\_\_ is used to organise the information collected during the interview and systematically evaluates the patient through a series of questions, assessing appearance and behaviour, thought processes and content.
- Mental status examination
  - Clinical interview
  - Psychological test
  - Observation
8. Which of the following neurotransmitters plays a major role in the development of obsessive compulsive disorder?
- Adrenaline

- b. Serotonin
  - c. Dopamine
  - d. Glutamate
9. Which of the following disorders is not characterized by intrusive thoughts?
- a. OCD
  - b. Body dysmorphic disorder
  - c. Hoarding
  - d. None of the above
10. Which of the following neurotransmitters is **NOT** believed to be involved in depression and mania?
- a. Acetylcholine
  - b. Dopamine
  - c. Serotonin
  - d. Norepinephrine
11. When Mwalongo visits mental health practitioners, she typically express their complaints in an emotional and exaggerated fashion coupled with a long and complicated medical history of her condition. Mwalongo could be suffering from
- a. Malingering disorder
  - b. Conversion disorder
  - c. Somatization disorder
  - d. Body dysmorphic disorder
12. The object of experience in people with depersonalization disorder include the following except
- a. Lifeless
  - b. Self-control
  - c. Isolated
  - d. Unfamiliar
13. Research has shown that global suicide rates in the last 45 years have increased by
- a. 80%
  - b. 70%

- c. 60%
- d. 50%

14. Pelekelo has been diagnosed with Dysthymia. What principle symptoms are identified with this diagnosis?

- a. Persistent depressive disorder
- b. Major depression
- c. Minor depression
- d. All the above

15. Veronika is a psychiatrist at Chainama Mental Hospital and has a patient with a personality disorder exhibiting eccentric behaviour marked by odd patterns of thinking, communication, discomfort with close personal relationships, and often exhibits unusual ideas of reference. Veronika's patient most likely has \_\_\_\_\_.

- a. Schizotypal personality disorder
- b. Borderline personality disorder
- c. Schizoid personality disorder
- d. Narcissist personality disorder

16. Mwandu is a college student with excessive emotionality and attention seeking behaviours. These behaviours are characterised by inappropriate sexual seduction, Mwandu could be diagnosed with \_\_\_\_\_.

- a. Dependent personality disorder
- b. Histrionic personality disorder
- c. Paranoid personality disorder
- d. Narcissistic personality disorder

17. To identify mental retardation, an individual must score at least

- a. One standard deviation below the mean
- b. Two standard deviations below the mean
- c. Two standard deviations above the mean
- d. One standard deviation above the mean

18. The Dypareunia sexual disorder is found \_\_\_\_\_.

- a. Exclusively in females

- b. Exclusively in males
- c. More in males than females
- d. More in females than males

19. Dyslexia is a \_\_\_\_\_

- a. Communication disability
- b. Learning disability
- c. Language disability
- d. Expressive disability

20. Rufa is a young adult male who was diagnosed with Alcohol Abuse Disorder. When he visited the hospital for medication examination, the doctor found Cirrhosis. What is Cirrhosis?

- a. Erectile dysfunction
- b. Inflammatory disease of the pancreas
- c. Hardening of the liver
- d. A syndrome of the central nervous system that results in confusion, loss of balance and or vision

**SECTION B: FILL IN THE BLANKS (Each question carries ½ mark).**

1. The \_\_\_\_\_ is driven by the pleasure principle, but the \_\_\_\_\_ is driven by the reality principle.
  
2. Dr. Jones is interested in whether a new treatment for autism will be helpful. She recruits 30 participants, and she randomly assigns 15 to receive drug X and 15 to receive a placebo. After 3 weeks of treatment, she measures social engagement. In this study, the independent variable is \_\_\_\_\_ and the dependant variable is \_\_\_\_\_.
  
3. \_\_\_\_\_ is a disorder in which people experience sudden, frequent and unexplained periods of intense terror.

4. The Thematic Apperception Test is an example of \_\_\_\_\_ tests.
5. Self \_\_\_\_\_ or \_\_\_\_\_ self-concept \_\_\_\_\_ refers \_\_\_\_\_ to \_\_\_\_\_  
\_\_\_\_\_
6. \_\_\_\_\_ anxiety refers is the most basic form of anxiety and is typically based on fears of real and possible events, such as being bitten by a dog or falling from a ladder. The most common way of reducing tension from this anxiety is taking oneself away from the situation.
7. In psychoanalysis, \_\_\_\_\_ refers to interpreting the relationship between therapist and client as indicative of the clients' relationship with others.
8. \_\_\_\_\_ phobia is distinguished by an individual's fear or anxiety to an object or a situation.
9. \_\_\_\_\_ are intrusive, time consuming, unwanted thoughts, urges or images that cause the individual distress and impair daily functioning.
10. Environmental events or stimuli that trigger behaviour are known as \_\_\_\_\_. They are part of the ABC's of behaviour.
11. Sexual paraphilia involving non-living objects is known as \_\_\_\_\_.

12. Sissies are found in the \_\_\_\_\_ category of disorders.
13. A \_\_\_\_\_ is an erroneous belief that is fixed and firmly held despite clear contradictory evidence.
14. A sudden, strong and unreflective urge or desire to act is found in people with \_\_\_\_\_ disorders.
15. Disturbances in movements is a characteristic of \_\_\_\_\_ schizophrenia.
16. In childhood, disorders characterized by outward-directed behaviors such as aggressiveness, over activity, conduct disorder, and oppositional defiant disorders are all grouped under \_\_\_\_\_ disorders.
17. Childhood disorders that cause serious problems with an array of social and developmental delays and disabilities including Autism and Attention Deficit Hyperactivity Disorders are broadly categorized as \_\_\_\_\_ disorders.
18. In personality disorders, those that appear dramatic, emotional and erratic are classified in \_\_\_\_\_.
19. For the last 3 months, Arthur aged 4 has been ingesting non-nutritive substances. Arthur could potentially have \_\_\_\_\_, a form of eating disorder.
20. Alice suddenly and unexpectedly travelled away from home, and develops an inability to recall her past in order to create new identity. These tendencies place Alice at a higher risk of suffering from \_\_\_\_\_.

## PART 2

### SECTION A: SHORT ESSAY (CHOOSE ONE). Each question carries 5 MARKS.

1. Briefly explain the use of neurological tests, physical examination and behavioural assessments as methods of clinical assessment.
2. Define compulsions and obsessions. Briefly explain how they can cause significant distress to a person's daily functioning.

### SECTION B: LONG ESSAY (COMPULSORY). This question carries 10 marks.

1. Discuss Generalized Anxiety Disorder (GAD), its aetiology, epidemiology, comorbidity and treatment.

## PART 3

### SECTION A: SHORT ESSAY (CHOOSE ONE). Each question carries 5 MARKS.

1. With meaningful illustrative pathways of neurotransmitters, discuss the effects of alcohol on the brain
2. What is Autism?
  - a. What characteristics are common in individuals with Autism?
  - b. Why is Autism referred to as a spectrum disorder?
  - c. What treatments strategies are available to individual with Autism, comment on their efficacy?

### SECTION B: LONG ESSAY (CHOOSE ONE). Each question carries 10 Marks.

1. With illustrative examples, discuss psychoactive drugs
  - a. What are the six categories in which psychoactive drugs are classified?
  - b. What known effects are exhibited by taking these drugs?
  - c. What are possible treatment strategies can be used for an individual abusing these drugs
2. What are paraphilias? With examples, discuss
  - a. The model for developing paraphilia
  - b. The seven classifications of paraphilias and their features or characteristics

**END OF EXAMINATION**

**ALL THE BEST 😊**

**THE UNIVERSITY OF ZAMBIA**  
**SCHOOL OF HUMANITIES AND SOCIAL SCIENCES**  
**DEPARTMENT OF PSYCHOLOGY**

**2019/2020 ACADEMIC YEAR FINAL EXAMINATION**

**COURSE: PSG 9114 – COMMUNITY PSYCHOLOGY**

**DATE: 30<sup>TH</sup> NOVEMBER 2020**

**TIME: 09:00HRS – 12:00HRS**

**VENUE: UPPER DINNING HALL**

**INSTRUCTIONS: THIS PAPER CONSISTS OF 2 SECTIONS: SECTIONS A AND B.**

**SECTION A CONSISTS OF SHORT ESSAYS. ANSWER ANY FOUR (4) SHORT ESSAYS. EACH QUESTION CARRIES 5 MARKS.**

**SECTION B CONSISTS OF LONG ESSAYS. ANSWER ANY TWO (2) LONG ESSAYS FROM THIS SECTION. EACH QUESTION CARRIES 15 MARKS.**

**SECTION A: ANSWER ANY FOUR (4) QUESTIONS FROM THIS SECTION**

1. Briefly explain the three (3) types of prevention: primary, secondary and tertiary prevention.
2. With reference to programme evaluation, briefly explain four (4) reasons why programme theories may work for one population and not another.
3. According to the PICO network, community organising proceeds through a cycle of organizing. Briefly explain the four (4) phases in this cycle.
4. The core values of Community Psychology are key to the profession. Explain three (3) reasons why it is important for Community Psychologists to be aware of these core values.
5. Edison Trickett and his colleagues proposed the four ecological principles model for understanding human environments. Briefly explain the principle of interdependence according to this model.
6. One of the most common community organising techniques is community development. Briefly explain the four domains of development that encompass community development.

**SECTION B: ANSWER ANY TWO (2) QUESTIONS FROM THIS SECTION.**

1. "Our personal values about relationships, accountability, social change, priorities and our personal political world view all shape our priorities and agenda for community work" (Bond, 1989, p.382). Discuss the seven core values of Community Psychology.
  
2. Urie Bronfenbrenner proposed the ecological theory of development. In Community Psychology, Rappaport (1977) proposed a similar concept called the ecological levels of analysis, which highlights distal and proximal systems in our communities.
  - a. Draw a figure that illustrates the ecological levels of analysis from the perspective of Community Psychology.
  
  - b. Discuss each of the ecological levels as proposed by Rappaport (1977).
  
3. Program implementation and evaluation are key elements of community projects.
  - a. Differentiate program implementation and programme evaluation
  
  - b. Successful programme implementation is dependent on community participation through participatory action research approach. Describe participatory action research.
  
  - c. Briefly explain any five (5) aspects of project implementation.
  
  - d. Process evaluation is important for any project. What is process evaluation? Briefly explain four (4) reasons why process evaluation is important.

**ALL THE VERY BEST** 😊

**THE UNIVERSITY OF ZAMBIA  
SCHOOL OF HUMANITIES AND SOCIAL SCIENCES  
DEPARTMENT OF PSYCHOLOGY  
2019/2020 END OF YEAR EXAMINATION**

**PSG 9314: HEALTH PSYCHOLOGY**

**TIME: THREE HOURS**

**INSTRUCTIONS**

THIS EXAMINATION HAS TWO SECTIONS. ANSWER ANY FOUR QUESTIONS FROM SECTION A. ANSWER ANY ONE FROM SECTION B.

**SECTION 1**

**SHORT ESSAYS (5 MARKS EACH)**

**Answer any 4 short essays**

- a. Explain why communication skills are useful to a health practitioner.
- b. Briefly explain the social component of the biopsychosocial model.
- c. What strategies does a chronically ill person cope with their illness?
- d. Describe Kubler-Ross's stages of dying.
- e. Discuss the physical and psychological benefits of exercise.

**SECTION 2**

**LONG ESSAYS (15 MARKS)**

**Answer any 1 long essay**

1. Use the health belief model to explain how it can be used to promote health regarding COVID 19.
2. Over the past decade, Zambia has seen an increase in alcohol abuse amongst adolescents. Discuss the stages of addiction and explain the health implications of consuming alcohol.

**END OF EXAMINATION**

**THE UNIVERSITY OF ZAMBIA  
SCHOOL OF HUMANITIES AND SOCIAL SCIENCES  
DEPARTMENT OF PSYCHOLOGY  
2019/2020 END OF YEAR EXAMINATION**

**PSG 9314: HEALTH PSYCHOLOGY(2)**

**TIME: THREE HOURS**

**INSTRUCTIONS**

THIS EXAMINATION HAS TWO SECTIONS. ANSWER ANY FOUR QUESTIONS FROM SECTION A. ANSWER ANY ONE FROM SECTION B.

**SECTION 1**

**SHORT ESSAYS (5 MARKS EACH)**

**Answer any 4 short essays**

- a. Discuss the physical and psychological benefits of exercise.
- b. Define 'open questions' and discuss why 'open questions' must be used as often as possible.
- c. Briefly explain the psychological component of the biopsychosocial model.
- d. What strategies does a chronically ill person cope with their illness?
- e. Describe Kubler-Ross's stages of dying.

**SECTION 2**

**LONG ESSAYS (15 MARKS)**

**Answer any 1 long essay**

1. Use the health belief model to explain how it can be used to promote health. Explain with use of an example.
2. Over the past decade, Zambia has seen an increase in substance use amongst young people. Discuss the stages of addiction and explain the health implications of consuming alcohol.

**END OF EXAMINATION**

**THE UNIVERSITY OF ZAMBIA**  
**SCHOOL OF HUMANITIES AND SOCIAL SCIENCES**  
**DEPARTMENT OF PSYCHOLOGY**  
**2019/2020 ACADEMIC YEAR FINAL EXAMINATIONS**

**PSG 9410: INDUSTRIAL AND ORGANISATIONAL PSYCHOLOGY**

**TIME: THREE (3) HOURS**

**INSTRUCTIONS**

THIS EXAMINATION HAS ONE SECTION; ANSWER A TOTAL OF **FIVE (5)** QUESTIONS.

**SECTION A: LONG ESSAYS.**

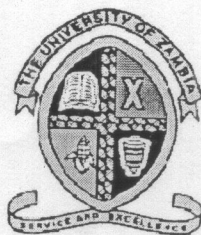
**Answer any five (5) of the following questions. Each question carries 10 marks.**

1. With reference to occupational stress, explore some of the actions employees and managers may take to provide a more desirable work environment and improve employee adjustment to work.
2. Discuss physical causes of accidents in the work environment and suggest how accidents could be prevented.
3. Trace the history of Industrial and Organisational (I/O) psychology, highlighting the key people and landmark events (with the exception of the Hawthorne Studies) that contributed to the development of the field. Your answer should clearly explain these contributions.
4. Define job analysis and discuss the four commonly used approaches to collecting job analysis information. Of these approaches, is there one that you would recommend over the others? Briefly explain your answer.
5. Describe the Hawthorne studies making clear their findings. Discuss why these studies are of significance to the field of I/O psychology.

6. With clear illustrations where possible, explain how job satisfaction relates to the following;
- i. Job performance
  - ii. Turnover
  - iii. Absenteeism
  - iv. Health and well being
  - v. Life satisfaction
7. You have just started work with the newly introduced HR department of an organisation that does not evaluate its employees' performance except for the occasional informal feedback given by supervisors in the normal course of the workday. You approach the Chief Executive Officer (CEO) about it, making it clear how strongly you feel about the importance of introducing employee work evaluation. In response, the CEO requests you to prepare a write-up on why the organisation should start conducting employee performance and proposals on how this activity could be done.

Write a clearly thought-out answer in response to the CEO's request.

**END OF EXAMINATION**



THE UNIVERSITY OF ZAMBIA

DEPARTMENT OF PSYCHOLOGY

FORENSIC PSYCHOLOGY (PSG 9414) FULL-TIME FINAL  
EXAMINATIONII (2019/2020 ACADEMIC YEAR)

**INSTRUCTIONS:**

- i. **TIME: Three (3) Hours**
- ii. **This examination has Five (5) Sections**
- iii. **Carefully read the instructions under each section**
- iv. **ANSWERS FOR SECTIONS A, B & C MUST BE WRITTEN ON THE QUESTION PAPER**

**SECTION A: MULTIPLE CHOICE**

*Attempt all questions in this section by choosing the best answer in each of the following questions*

1. Which of the following does criminal profiling share with crime linkage?
  - a) Both relate to female perpetrators of crime
  - b) Both relate to male perpetrators of crime
  - c) Both relate to instances where the motive for offending is clear
  - d) Both relate to crimes committed by juvenile
2. How to question an eye witness is an example of
  - a) An estimator variable
  - b) A dependent variable
  - c) A systems variable
  - d) An independent variable
3. With reference to crime investigations, verification mode relates to
  - a. Hypothesis testing
  - b. Case building
  - c. Confirmation bias
  - d. falsification

4. When the area of the brain called fusiform gyrus is damaged, the result is
  - a. Violent offending behaviour
  - b. Unconscious transference
  - c. prosopagnosia
  - d. counter-transference
  
5. Which of the following is a possible explanation of why post-event information affects witness memory?
  - a. Post-event information refers to the expectations a witness may have about who criminals tend to be. These expectations can prejudice the testimony provided by the witness.
  - b. Post event information refers to any information a witness initially forgets and then recalls at a later date. It affects witness memory because it means the evidence they give to begin with is unlikely to be complete.
  - c. Memory is 'constructive' in nature, which tends to make people adapt their memories to incorporate new information. Post event information, even if it suggests a detail the witness did not see, can lead to a witness altering their memory to incorporate the new information.
  - d. Post-event information, which is any information provided about the crime after it has happened, always improves the accuracy of witness memory because it helps compensate for the natural process of forgetting.
  
6. Why are Psychologists and Law enforcement professionals generally uncomfortable with the use of the polygraph in the criminal justice system?
  - a. It is too scientific for the criminal justice system
  - b. Research shows it produces post event effect
  - c. It's illegal in the Common Law jurisdiction
  - d. None of the above
  
7. Which of the following is a possible explanation for allowing free recall in investigative interviewing
  - a. Rapport building
  - b. Prevention of future crimes
  - c. Avoiding biasing replies
  - d. None of the above
  
8. "You said that your uncle pushed something into your mouth, what exactly was it that he pushed into your mouth?" This is an example of
  - a. A biased question
  - b. An open question
  - c. A specific question
  - d. All the above.

9. Which of the following is true about crime linkage analysis?
- Distinguishes lies from truths
  - Enhances accuracy and detail in an investigative interview
  - Predicts offender characteristics
  - Identifies crime series
10. Which of the following statements best describes the role of eyewitness evidence in a criminal investigation?
- Eyewitnesses are common feature of criminal investigations and the accuracy of their evidence is critical to ensuring the correct verdict.
  - Eyewitness evidence is rarely used in criminal investigations.
  - Eyewitness evidence often features in criminal investigations, but rarely influences the outcome.
  - Eyewitness evidence should only be used as a last resort because evidence from forensic scientific analysis is 100% reliable
11. Why is the phenomenon of inattention blindness relevant to eyewitness testimony?
- Innattentional blindness is a neurological condition that affects about 5% of the population. A witness suffering from innattentional blindness would not be able to remember any visual details about what happened.
  - Innattentional blindness describes a situation where someone does not notice something happening right in front of them. It is important to eyewitness testimony as a witness may fail to report an important part of a crime because they did not attend to it.
  - Innattentional blindness is a condition affecting the retinal cells in the eye. A witness suffering from innattentional blindness would only be able to see a crime if it happened within five metres.
  - None of the above
12. PhotoFit can be best described as:
- An image comprised of numerous black-and-white prints of facial features
  - A database showing whole faces
  - Both A and B
  - None of the above
13. Which of the following is not one of the elements of a cognitive interview?
- communication
  - memory and cognition
  - debriefing
  - Social dynamics.
14. Which of the following is true about false confessions according to research
- People confess absent mindedly

- b. People confess to escape possible conviction and imprisonment
  - c. People confess to escape police coercion
  - d. People confess to *avenge past wrongs*
15. Which of the following can be a problem with selecting foils to match the appearance of the suspect, rather than the witness' description of what they look like?
- a. Matching to appearance is reliant on the subjective opinion of just one person.
  - b. It can lead to an unnecessary degree of similarity between the foils and the suspect, making the task of identifying the suspect overly difficult.
  - c. Matching foils to the appearance of the suspect can lead to the suspect 'standing out' in an obvious way.
  - d. The descriptions provided by the witness tend to be very full and rich, so ignoring them ignores a very useful source of information
16. Which of the following is true about face recognition
- a. Faces are recognized using different cognitive processes than other objects
  - b. Faces are impossible to recognize
  - c. Faces are recognized using same cognitive processes used for other objects.
  - d. None of the above.
17. What is verbal overshadowing?
- a. When the investigator interrupts an interviewee
  - b. When a witness is asked for a verbal description of a suspect's face and this description disrupts the witness' visual memory of what the suspect looked like.
  - c. When a witness is unable to talk about what they witnessed.
  - d. When a witness is frustrated by police non-stop interview.
18. Criminal psychology interview suggest that crime investigators use all the following manipulative tactics except one. Identify the exception.
- b. Self-esteem manipulation
  - c. Minimization
  - d. pretending to be in possession of incriminating evidence
  - e. Reality monitoring
19. In investigative Interviewing, which of the following is the logical flow of events?
- a. Scarcity of information, information burst, hypothesis generation and hypothesis testing
  - b. Information burst, hypothesis generation, hypothesis testing and scarcity of information.
  - c. Hypothesis generation, information burst, scarcity of information, and hypothesis testing.
  - d. Hypothesis testing, scarcity of information, information burst and hypothesis generation.
20. Which of the following is not one of the sources of forensic evaluation information?
- a. Police reports

- b. Pre-sentence reports
- c. Court proceedings
- d. Judicial precedence

**SECTION B: FILL IN THE BLANKS**

*Attempt all questions in this section by providing short words or phrases*

1. Loftus (1993) describes how post event information can sneak in like the enemy within the Trojan horse, not detected at encoding but only to appear and wreak havoc at retrieval stage. This corruption of memory by post event information is called \_\_\_\_\_ effect.
2. Two examples of sources of law are :.
  - i. \_\_\_\_\_
  - ii \_\_\_\_\_
3. Zambia follows the ----- law legal system which draws heavily from the English legal system
4. Mwisa, in your own words and taking all the time you need, I want you to describe to me what happened'. This is an example of ----- question used in investigative interviewing
5. ....questions are the types of investigative questions most recommended for child witnesses?
6. The principle of ..... requires courts of law to stand by decided cases.
7. An eyewitness did not notice that the first suspect grabbed the gun from the second suspect and used it to shoot the victim. As a consequence, the witness wrongly informed the police that it was the second suspect who had the gun all the time and that he used it to kill the deceased person. This illustrates an attention problem known as.....

8. .... is a form of behavioural analysis used in identifying crimes committed by the same offender(s) through behavioural similarity.
9. Although many investigator wrongly believe that the..... measures lies, it actually only measures arousal of a person.
10. According to David Canter(2012) ..... psychology is the application of psychological research and principles in the quest for accurate and detailed information pertaining to criminal behaviour.
11. .... is one of the behavioural criminal investigative tools used by investigators to predict offender characteristics as well as location of offender residence.
12. An eyewitness must see the suspect from a maximum distance of 15metres and a minimum illumination of 15 lux, otherwise identifying the suspect later becomes very problematic. This has been referred to as.....
13. Name the organisation currently working towards bringing justice to individuals wrongly imprisoned.
14. .... is a behavioural criminal investigations tool used to support the investigative process by enhancing the accuracy and detail of cooperative witnesses.
15. .... is the term used to describe the similarity in testimony that result from two or more witnesses sharing their account before they are interviewed by police.
16. Modern systems of criminal procedures are divided into two basic models namely a)..... and b)..... Systems.
17. The theory relating to statutory interpretation of is important for forensic psychology scholars .Identify any two rules employed in the interpretation of legal statutes:
  - a. .... and (b).....

## SECTION C: TRUE OR FALSE

Attempt all questions in this section by putting in a mark (✓) in either column to answer either true or false

#	Question	True	False
1.	'Was she running or walking?' is an example of option posing questions		
2.	According to research in investigative psychology, children never lie		
3.	Civil proceedings involve disputes between citizens and the state rather than between citizens		
4.	The CI procedure has been found in many studies to help female witnesses remember more than male witnesses		
5.	Forward telescoping can be explained as people's tendency to overestimate the number of events that occur in a given time period, leading them to think the crime took place more recently than it actually did.		
6.	Eyewitness memory is reconstructive but photographic in nature.		
7.	Prosopagnosia is another name for the area of the brain known as the "fusiform gyrus"		
8.	'Bias in face recognition' means that people tend to be better at recognising the types of faces they regularly come in contact with.		
9.	If two eyewitnesses provide detailed accounts that are almost identical, the most likely explanation is that human memories are like a computer's memory, meaning we all tend to remember things in very similar ways.		
10.	It is a problem for a police officer to ask a witness for specific information that the witness has not previously mentioned. This is because human memory is 'suggestible' which means that asking for such specific information might cause a witness to alter his memory to incorporate that information.		
11.	If a witness did not notice a key part of the crime happening right in front of his eyes, it has the effect of making the rest of his evidence unreliable.		
12.	The legal system does not allow the application of customary law in that customary law is repugnant to equity, justice and good conscience and tends to contravene the written law.		
13.	Interrogation is to information seeking as investigative interviewing is to confession seeking		
14.	According to psycho-legal research, most people believe human memory works like a tape-recorder or an iPod.		
15.	One characteristic that LD witnesses, child witnesses and elderly witnesses have in common is high suggestibility		
16.	Civil adjudication is inquisitorial while criminal adjudication is adversarial.		
17.	Custody over children during divorce proceedings in domestic		

	relations is an example of civil proceedings in court.		
18	Evidential use of CCTV as a means of establishing disputed identification in court is accurate except where the quality of video footage is poor.		

## SECTION D: SHORT ESSAYS

*Write brief notes on any two (2) of the following topics*

1. Discuss any five measures you would take to improve forensic interviewing of children in the Zambian criminal justice system.
2. Briefly outline the link between forensic evaluation and the legal system and state why it is important for forensic psychologists to have basic knowledge of law and the legal system.
3. Mental health professionals interact with different actors in the criminal process. Identify and describe any four criminal procedure personnel that you expect to interact with in forensic practice and state why you think they are important to forensic evaluations.
4. Briefly describe the adversarial and inquisitorial legal procedural systems, bringing out the features of each system.
5. Identify and explain crime scene behaviour that would help you narrow the search for the perpetrator.

## SECTION E: LONG ESSAY

*Attempt any TWO (2) of the following long essays*

1. Outline the strengths and limitations of CCTV evidence as an aid to offender identification.
2. Explain, with examples, what you understand by the following psycho-legal terms:
  - e. Source attribution error
  - f. Minimisation
  - g. Confirmation bias

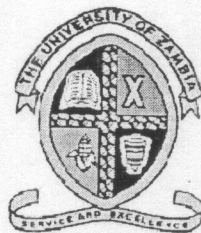
h. Unconscious transference

i. The PEACE model of Investigative interviewing

3. Legal psychologists are agreed that "... while some types of questions are to be used in investigative interviewing, others types of questions have to be avoided"(Pike,2015).

Discuss this assertion and bring out various categories of questions available to investigative interviewers.

.....**END OF EXAMINATION**.....



**THE UNIVERSITY OF ZAMBIA**  
**DEPARTMENT OF PSYCHOLOGY**

**FORENSIC PSYCHOLOGY (PSG 9414) FULL-TIME FINAL  
EXAMINATION (2019/2020 ACADEMIC YEAR)**

**INSTRUCTIONS:**

- i. TIME: Three (3) Hours**
- ii. This examination has Five (5) Sections**
- iii. Carefully read the instructions under each section**
- iv. ANSWERS FOR SECTIONS A, B & C MUST BE WRITTEN ON THE QUESTION PAPER**

**SECTION A: MULTIPLE CHOICE**

*Attempt all questions in this section by choosing the best answer in each of the following questions*

1. Investigative interviewing, in sharp contrast with interrogation, has been described as being 'dualistic'. This means
  - a) It is evidence based
  - b) It involves mutual and open-minded communication between investigator and suspect
  - c) A two confrontation between interviewer and interviewee.
  - d) It involves both male and female criminal suspects
2. How to question an eye witness is an example of
  - a) An estimator variable
  - b) A dependent variable
  - c) A systems variable
  - d) An independent variable
3. A classic study by Loftus and Palmer (1974) demonstrated that the way a crime investigator phrases questions can affect an eyewitness's recall of criminal incidence. In this case the phrasing of investigative questions is an example of
  - a. Co-witnessing

- b. Post-event information
  - c. Constructive investigation
  - d. Weapon effect
4. When the area of the brain called fusiform gyrus is damaged, the result is
- a. Violent offending behaviour
  - b. Unconscious transference
  - c. prosopagnosia
  - d. counter-transference
5. Which of the following is a possible explanation of why post-event information affects witness memory?
- a. Post-event information refers to the expectations a witness may have about who criminals tend to be. These expectations can prejudice the testimony provided by the witness.
  - b. Post event information refers to any information a witness initially forgets and then recalls at a later date. It affects witness memory because it means the evidence they give to begin with is unlikely to be complete.
  - c. Memory is 'constructive' in nature, which tends to make people adapt their memories to incorporate new information. Post event information, even if it suggests a detail the witness did not see, can lead to a witness altering their memory to incorporate the new information.
  - d. Post-event information, which is any information provided about the crime after it has happened, always improves the accuracy of witness memory because it helps compensate for the natural process of forgetting.
6. Which of the following is a 'focused' question?
- a. 'You mentioned the man was talking to a woman when you first saw him. Could you describe the woman for me?'
  - b. 'You described the suspect as a man in dark clothing. Can you tell me where you were standing when you saw this man in the black coat?'
  - c. 'You said you saw a man by the bank. Was he running or walking?'
  - d. Could you please describe to me what happened at the crime scene?
7. Which of the following is a possible explanation for allowing free recall in investigative interviewing
- a. Rapport building
  - b. Prevention of future crimes
  - c. Avoiding biasing replies
  - d. None of the above
8. "You said that your uncle pushed something into your mouth, what exactly was it that he pushed into your mouth?". This is an example of
- a. A biased question

20. Which of the following is not one of the sources of forensic evaluation information?
- Police reports
  - Pre-sentence reports
  - Court proceedings
  - Judicial precedence

## SECTION B: FILL IN THE BLANKS

*Attempt all questions in this section by providing short words or phrases*

- 'Mwisa, in your own words and taking all the time you need, I want you to describe to me what happened'. This is an example of ----- question used in investigative interviewing
- 'You mentioned the driver at the crime scene, was he wearing a mask too?' this is an example of ----- question used in investigative interviewing
- Two examples of sources of law are :
  - \_\_\_\_\_
  - \_\_\_\_\_
- Zambia follows the ----- law legal system which draws heavily from the English legal system
- The principle of ..... requires courts of law to stand by decided cases.
- An eyewitness did not notice that the first suspect grabbed the gun from the second suspect and used it to shoot the victim. As a consequence, the witness wrongly informed the police that it was the second suspect who had the gun all the time and that he used it to kill the deceased person. This illustrates an attention problem known as.....
- State the two factors that determine who the eyewitness points out at an identification parade.

8. Although many investigator wrongly believe that the..... measures lies, it actually only measures arousal of a person.
9. What is the term used to describe the similarities in testimony that emerge if two or more witnesses share their account?
10. According to David Canter(2012) ..... psychology is the application of psychological research and principles in the quest for accurate and detailed information pertaining to criminal behaviour.
11. .... is one of the behavioural criminal investigative tools used by investigators to predict offender characteristics as well as location of offender residence.
12. An eyewitness must see the suspect from a maximum distance of 15metres and a minimum illumination of 15 lux, otherwise identifying the suspect later becomes very problematic. This has been referred to as.....
13. Name the organisation currently working towards bringing justice to individuals wrongly imprisoned.
14. .... is a behavioural criminal investigations tool used to support the investigative process by enhancing the accuracy and detail of cooperative witnesses.
15. .... is the term used to describe the similarity in testimony that result from two or more witnesses sharing their account before they are interviewed by police.
16. Modern systems of criminal procedures are divided into two basic models namely a)..... and b)..... Systems.
17. The theory relating to statutory interpretation of is important for forensic psychology scholars .Identify any two rules employed in the interpretation of legal statutes:
  - a. ....

20. Which of the following is not one of the sources of forensic evaluation information?
- Police reports
  - Pre-sentence reports
  - Court proceedings
  - Judicial precedence

## SECTION B: FILL IN THE BLANKS

*Attempt all questions in this section by providing short words or phrases*

- 'Mwisa, in your own words and taking all the time you need, I want you to describe to me what happened'. This is an example of ----- question used in investigative interviewing
- 'You mentioned the driver at the crime scene, was he wearing a mask too?' this is an example of ----- question used in investigative interviewing
- Two examples of sources of law are :.
  - \_\_\_\_\_
  - \_\_\_\_\_
- Zambia follows the ----- law legal system which draws heavily from the English legal system
- The principle of ..... requires courts of law to stand by decided cases.
- An eyewitness did not notice that the first suspect grabbed the gun from the second suspect and used it to shoot the victim. As a consequence, the witness wrongly informed the police that it was the second suspect who had the gun all the time and that he used it to kill the deceased person. This illustrates an attention problem known as.....
- State the two factors that determine who the eyewitness points out at an identification parade.

b. ....

**SECTION C: TRUE OR FALSE**

*Attempt all questions in this section by putting in a mark (√) in either column to answer either true or false*

#	Question	True	False
1.	The CI procedure has been found in many studies to help female witnesses remember more than male witnesses		
2.	According to research in investigative psychology, children never lie		
3.	Civil proceedings involve disputes between citizens and the state rather than between citizens		
4.	Estimator variable can be described as the procedure used to obtain an identification of the perpetrator.		
5.	Forward telescoping can be explained as people's tendency to overestimate the number of events that occur in a given time period, leading them to think the crime took place more recently than it actually did.		
6.	'Let's focus on the driver and the car. When did you first see the car? This is a focussed question.		
7.	Prosopagnosia is another name for the area of the brain known as the "fusiform gyrus"		
8.	'Bias in face recognition' means that people tend to be better at recognising the types of faces they regularly come in contact with.		
9.	If two eyewitnesses provide detailed accounts that are almost identical, the most likely explanation is that human memories are like a computer's memory, meaning we all tend to remember things in very similar ways.		
10.	It is a problem for a police officer to ask a witness for specific information that the witness has previously mentioned. This is because human memory is 'suggestible' which means that asking for specific information might cause a witness to alter his memory to incorporate that information.		
11.	If a witness did not notice a key part of the crime happening right in front of his eyes, it has the effect of making the rest of his evidence unreliable.		
12.	The legal system does not allow the application of customary law in that it is repugnant to equity, justice and good conscience and tends to contravene the written law.		
13.	Interrogation is to information seeking as investigative interviewing is to confession seeking		
14.	According to psycho-legal research, most people believe human memory works like a tape-recorder or an iPod.		
15.	One characteristic that LD witnesses, child witnesses and elderly		

	witnesses have in common is high suggestibility		
16.	Civil adjudication is inquisitorial while criminal adjudication is adversarial.		
17.	Custody over children during divorce proceedings in domestic relations is an example of civil proceedings in court.		
18	Co-witnessing is relevant to the Zambian criminal justice system		

## SECTION D: SHORT ESSAYS

*Write brief notes on any two (2) of the following topics*

1. Mental health professionals interact with different actors in the criminal process. Identify and describe any four criminal procedure personnel that you expect to interact with in forensic practice and state why you think they are important to forensic evaluations.
2. Briefly outline the five measures you would take to reduce the incidence of false confessions in the Zambian Criminal Justice System
3. Briefly outline the link between forensic evaluation and the legal system and state why it is important for forensic psychologists to have basic knowledge of law and the legal system.
4. The "PEACE" model and the "SUE" strategy of investigative interviewing
5. Briefly describe the adversarial and inquisitorial legal procedural systems ,bringing out the features of each system

## SECTION E: LONG ESSAY

*Attempt any TWO (2) of the following long essays*

1. Legal psychologists are agreed that "... while some types of questions are to be used in investigative interviewing, others types of questions have to be avoided"(Pike,2015). Discuss this assertion and bring out various categories of questions available to investigative interviewers.

2. Outline the strengths and limitations of CCTV evidence as an aid to offender identification.
3. Explain in detail why you would encourage Zambia police service to rely more on investigative interviewing than interrogation.

.....**END OF EXAMINATION**.....



THE UNIVERSITY OF ZAMBIA  
DEPARTMENT OF PSYCHOLOGY  
PSG 9510-PSYCHOMETRICS AND ASSESSMENT  
FULL-TIME/PARALLEL (2019/2020 ACADEMIC YEAR) EXAMINATION

**INSTRUCTIONS:** SECTIONS A & B SHOULD BE ANSWERED ON THE QUESTION PAPER WHILE SECTION C & D SHOULD BE ANSWERED ON THE PROVIDED ANSWER BOOKLET

ANSWER 3 QUESTIONS FROM QUESTION C  
ANSWER ONE QUESTION FROM SECTION D

1. Which of the following is the not the focus of a psychological testing report?
  - a. Background information
  - b. Introduction
  - c. Referral question
  - d. Literature search
2. What is one of the ways that has been suggested to make tests universally accepted across cultures?
  - a. Translation
  - b. Transformation
  - c. Teleportation
  - d. Transaction
3. Which method of test adaptation was employed in the development of the Pangá Munthu Test?
  - a. Translation
  - b. Adoption
  - c. Adaptation
  - d. Assembly
4. Which strategy was used to develop the Woodworth Personnel Data sheet?
  - a. Logical
  - b. Theoretical
  - c. Criterion
  - d. Factor Analysis

5. Which of the following is referred to as the most widely used test in structured personality tests?
  - a. NEO-PI
  - b. MMPI
  - c. JPI
  - d. 16-PF
6. In what instances are psychological assessments useful in work place assessments?
  - a. To increase the hit rate percentage
  - b. To increase the base rate percentage
  - c. To reduce the number of false positives
  - d. To reduce the number of false negatives
7. Which of the following is not a measure that is assessed in the Myer Briggs Type Indicator?
  - a. Sensing
  - b. Thinking
  - c. Feeling
  - d. Judging
8. What is the most useful way of carrying out assessment in the workplace?
  - a. Psychological assessment
  - b. Employment interview
  - c. Personality inventory
  - d. Work simulations
9. Who advocated for the "g" factor in explaining the concept of intelligence?
  - a. Charles Spearman
  - b. Louis Thurstone
  - c. Howard Gardner
  - d. Robert Sternberg
10. Which form of intelligence has recently been considered one of the most important?
  - a. Crystallised intelligence
  - b. Fluid intelligence
  - c. Emotional intelligence
  - d. Intrapersonal intelligence
11. Which version of Stanford Binet was linked to the theory of crystallised and fluid intelligence
  - a. Stanford-Binet Version 2
  - b. Stanford-Binet Version 3
  - c. Stanford Binet Version 4
  - d. All of the above
12. The extent to which a test assesses a variable to assumes to assess is referred to as
  - a. Content validity
  - b. Criterion validity

- c. Construct validity
  - d. Face validity
13. When a participant takes the same test for a second time it is likely that the scores will improve. This is a concept referred to as \_\_\_\_\_
- a. Practice effects
  - b. Improvement effects
  - c. Test-retest reliability
  - d. Internal consistency
14. Which sort of tests are used to compare a person's performance based on specific objectives
- a. Norm referenced test
  - b. Criterion referenced test
  - c. Grade-equivalent test
  - d. None of the above
15. The extent to which a test measures the hypothetical trait it is intended to measure is referred to as \_\_\_\_\_
- a. Content validity
  - b. Criterion validity
  - c. Construct validity
  - d. Face validity
16. A correlation of  $-0.80$  between meditation and anxiety symptoms would indicate \_\_\_\_\_
- a. Meditation and anxiety symptoms are unrelated.
  - b. Meditation effectively reduces anxiety symptoms.
  - c. Anxious people are more likely to meditate.
  - d. Meditation predicts lower levels of anxiety.
17. In what situation does an item-difficulty index of 1 occur?
- a. All examinees answer the item correctly
  - b. All examinees answer the item incorrectly
  - c. None are correct
  - d. All examinees evenly respond to the item correctly and incorrectly
18. What is the main advantage of using standardized tests?
- a. They have very good external validity.
  - b. They can determine cause and effect.
  - c. They provide information about individual differences.
  - d. They contain no biases.
19. The median is a better measure of central tendency than the mean for which of the following distributions?
- a. 1, 2, 3, 5, 6
  - b. 10, 12, 13, 14, 106
  - c. 275, 282, 293, 300, 311
  - d. 1024, 1024, 1024, 1048, 1059

20. Which is the most common type of scale used in psychological tests?
- continuous
  - discrete
  - ratio
  - none are correct
21. Standardized tests, like the MMPI and the Stanford-Binet Intelligence Test \_\_\_\_\_
- Give every member of the population an equal chance to be tested.
  - Are used only by clinical psychologists.
  - Provide information about individual differences among people.
  - Involve making careful observations of people in real-world settings
22. If you measured the number of children in each family in your research, which type of scale would you be using?
- continuous
  - discrete
  - interval
  - none are correct
23. If the computed value of the correlation coefficient for two variables, X and Y, is zero, what would the resulting scatterplot look like?
- upward, sloping to the right
  - upward, sloping to the left
  - downward, sloping to the right
  - none are correct
24. A test is considered "standardized" if the test includes: \_\_\_\_\_
- normative data
  - clearly specified procedures for administration
  - clearly specified procedures for scoring
  - all of the above are correct
25. A perfect correlation would be indicated by: \_\_\_\_\_
- 1.00
  - 0.00
  - + 1.00
  - + 1.00 or - 1.00
26. The beginning of the group intelligence testing movement is best associated with: \_\_\_\_\_
- the military's need to screen the intellectual ability of recruits
  - the civil service system's need to identify qualified postal workers
  - the need to identify slow learners in school
  - the need to identify the best applicant for a job

27. The Chinese testing program between 1115 B.C. and 1905 B.C. is most similar to which of the following modern-day practices?
- civil service testing
  - achievement testing
  - programs designed to detect drug abuse
  - college aptitude testing
28. Which of the following describes a "good" test? A good test \_\_\_\_\_.
- is valid
  - has norms
  - is reliable
  - all are correct
29. When analysing an item's discriminative abilities, the test developer should compare: \_\_\_\_\_
- the highest and lowest scorers on the test
  - the responses of people of different ages to the item
  - the responses from various minority groups to the item
  - the highest and middle scores on the test
30. Which best describes a "good" test item?
- the correct answer cannot be guessed
  - the item distinguishes high scorers from low scorers
  - almost all test-takers respond incorrectly, indicating the item is a challenging item
  - almost all test-takers respond correctly indicating the item is well written

### Section B - Fill in the blanks

- \_\_\_\_\_ tests compare an individual's performance with the performance of others.
- Based on Lewis Terman's version of calculating IQ, with an IQ of 100 is considered to have \_\_\_\_\_ level of intelligence.
- A person's ability to perceive, express, understand, and regulate emotions is referred to as \_\_\_\_\_ intelligence.
- \_\_\_\_\_ wrote the scoring criteria for the Stanford-Binet test and worked on the development of the IQ score.
- A \_\_\_\_\_ is a variable that a person wishes to explain by obtaining information from other variables.
- \_\_\_\_\_ is an effect that occurs when the first testing session influences scores from the second session.

7. \_\_\_\_\_ are tests that compare the person's current interests with those of others now in various occupations so as to determine their preferred occupation.
8. \_\_\_\_\_ rate is the percentage of cases in which a test accurately predicts success or failure on those people selected and rejected.
9. An assessment in which an actual job task is used in testing applicants' performance is referred to as \_\_\_\_\_
10. The \_\_\_\_\_ method is a method used in neuropsychological assessment where a wide variety of tests is used
11. The method of personality assessment in which test takers are shown ambiguous pictures and asked to create a story for the picture is called the \_\_\_\_\_
12. \_\_\_\_\_ are scores that have a mean of 10 and a standard deviation of 3
13. Straightforward, unmodified scores that are commonly used to account for any classification are referred to as \_\_\_\_\_
14. A standard Rorschach inkblot test uses \_\_\_\_\_ inkblots.
15. The use of the growth monitoring chart (under 5 card) by pediatricians to assess the development to children is a method referred to as \_\_\_\_\_.
16. In psychological testing, assessments that are used to measure previous learning are referred to as \_\_\_\_\_ tests.
17. \_\_\_\_\_ referencing is used to determine the degree to which an individual has mastered a skill.
18. \_\_\_\_\_ is credited to have coined the term mental test.
19. Interviews, observations and checklists comprise the \_\_\_\_\_ aspects of psychological assessment.
20. In 1883, \_\_\_\_\_ embarked on a series of experiments to demonstrate that individual differences exist in human sensory and motor functioning.
21. In 1905 the first version of the Binet-Simon intelligence scale consisting of \_\_\_\_\_ items of increasing difficulty was published.
22. \_\_\_\_\_ is an expression of the degree and direction of correspondence between two variables.

23. \_\_\_\_\_ is defined as the number of people who get a particular item on a test correct.
24. \_\_\_\_\_ determines whether the people who have done well on particular test items have also done well on the whole test.
25. In levels of measurement, the \_\_\_\_\_ scale possesses a meaningful 0 point.
26. \_\_\_\_\_ is a group of statistical techniques used to explore the relationship between a continuous dependent variable and a number of independent variables.
27. \_\_\_\_\_ format is a collective name for test items that require test takers to select a single correct response between two alternatives.
28. A widely accepted definition of \_\_\_\_\_ is; the assignment of numbers to properties or attributes of people, objects or events based on a set of rules.
29. The right of test takers to know their test scores and interpretation is the \_\_\_\_\_ aspect of ethical requirements.
30. The \_\_\_\_\_ is the most frequently occurring data in a distribution.

### **Section C - Short Essays**

#### **Answer three questions from this section**

1. What are some of the sources of error associated with the employment interview?
2. What are those factors that have been identified to affect intelligence in children?
3. Write an essay explaining the five main differences between testing and assessment? Be brief and to the point.
4. Give an outline of the general guidelines that DeVellis (1991) stipulated on writing test items.

### **Section D - Long essay**

#### **Answer one question from this section**

1. Discuss the various components of writing a psychological report.
2. What is item analysis in psychological testing and why is it important?

**UNIVERSITY OF ZAMBIA**  
**SCHOOL OF HUMANITIES AND SOCIAL SCIENCES**  
**2019/2020 ACADEMIC YEAR FINAL EXAMINATIONS**  
**SDS 2414: RESEARCH METHODS IN SOCIAL SCIENCES**

**TIME: THREE (3) HOURS**

**17<sup>TH</sup> DECEMBER, 2020**

**INSTRUCTIONS:**

- 1. WRITE ALL THE ANSWERS IN THE OFFICIAL ANSWER BOOKLET.**
  - 2. PLEASE READ THE INSTRUCTIOS UNDER EACH SECTION CAREFULLY.**
- 

**SECTION A: ANSWER ALL QUESTIONS IN THIS SECTION [10 MARKS]**

- 1. Write four sources of social research problems. [2 Marks]**
- 2. Define objectivity and give two reasons why it is significant in social research? [2 Mark]**
- 3. Identify and briefly explain the four scales of measurements in research. [2 Marks]**
- 4. Discuss the various methods of presenting data. [2 Marks]**
- 5. Define the following concepts in research [2 Marks]**
  - a. Probability sampling
  - b. Non-Probability sampling
  - c. Sampling frame
  - d. Sample

**SECTION B: ANSWER ALL QUESTIONS IN THIS SECTION [20 MARKS]**

- 1. Twenty-five students completed a questionnaire that measured their attitudes toward interpersonal violence. Respondents who scored high believed that in many situations a person could legitimately use physical force against another person. Respondents who scored low believed that in no situation (or very few situations) could the use of violence be justified. [10 Marks]**

52	47	17	8	92
53	23	28	9	90
17	63	17	17	23
19	66	10	20	47
20	66	5	25	17

- a. Construct a grouped frequency distribution with an interval of 5 to display these data. [2 Marks]
- b. On the same frequency distribution, show the cumulative [2 Marks]
- c. Calculate the relative frequency [2 Marks]
- d. Calculate the Mean and median and interpret the results? [2 Marks]
- e. What is the score of those who believed that in many situations a person could legitimately use physical force against another person? [ 2 Marks]

2. In a bid to improve road safety, the numbers of motor vehicle accidents in Zambia were tabulated by month for tarred roads and non-tarred roads by RATSA for the first seven months of the year 2020 and resulted in the following data. [10 Marks]

Month	Tarred	Not tarred
January	88	70
February	100	58
March	76	59
April	98	53
May	103	56
June	85	94
July	69	102

- Calculate and interpret the means for each type of road [6 Marks]
- Compare the occurrence of accidents between tarred and untarred roads, do you think there is any difference? Explain your answer. [2 Marks]
- Which months recorded the most accidents for the two types of roads? [2 Marks]

**SECTION C: ANSWER ALL QUESTIONS IN THIS SECTION [20 MARKS]**

- As a leading ethnographer in Zambia, you have been hired by the Zambian government to conduct a study on the areas in Lusaka where violent crime is rampant. Identify and discuss the steps you must undertake in order to bring about results and the dangers and obstacles you may face when conducting this type of research. As an ethnographer, examine and discuss what you would have to watch and listen for when conducting this type of research. [20 Marks]

**END OF EXAMINATION**

2. In a bid to improve road safety, the numbers of motor vehicle accidents in Zambia were tabulated by month for tarred roads and non-tarred roads by RATSA for the first seven months of the year 2020 and resulted in the following data. [10 Marks]

Month	Tarred	Not tarred
January	88	70
February	100	58
March	76	59
April	98	53
May	103	56
June	85	94
July	69	102

- Calculate and interpret the means for each type of road [6 Marks]
- Compare the occurrence of accidents between tarred and untarred roads, do you think there is any difference? Explain your answer. [2 Marks]
- Which months recorded the most accidents for the two types of roads? [2 Marks]

**SECTION C: ANSWER ALL QUESTIONS IN THIS SECTION [20 MARKS]**

- As a leading ethnographer in Zambia, you have been hired by the Zambian government to conduct a study on the areas in Lusaka where violent crime is rampant. Identify and discuss the steps you must undertake in order to bring about results and the dangers and obstacles you may face when conducting this type of research. As an ethnographer, examine and discuss what you would have to watch and listen for when conducting this type of research. [20 Marks]

**END OF EXAMINATION**

**THE UNIVERSITY OF ZAMBIA**  
**SCHOOL OF HUMANITIES AND SOCIAL SCIENCES**  
**DEPARTMENT OF SOCIAL WORK AND SOCIOLOGY**

**2019/2020 DEFERRED EXAMINATIONS**

**SDS 9110: HUMAN RIGHTS AND DEVELOPMENT**

**INSTRUCTIONS:** This paper has three sections. Read carefully instructions for each section.

**SECTION A: COMPULSORY**

1. The village headman of Senzeni village in Katete district is concerned that his subjects are unaware about human rights. He has called you to help sensitize his people. What will you tell these citizens about sources of human rights, human rights principles and obligations of the State? How can State obligations be monitored and assessed?

**SECTION B: BRIEF NOTES**

Write brief notes of five (5) of the following:

1. United Nations Human rights system
2. Second-generation human rights
3. Indivisibility of human rights
4. Absolute human rights
5. Non-absolute human rights
6. Civil rights
7. Cultural rights

**SECTION C: ANSWER ONE (1) QUESTION ONLY**

1. There have been concerns by some sectors of society that Zambia should constitutionalize economic, social and cultural rights. As student of human rights and development, provide some of the arguments advanced for-and-against constitutionalisation of the human rights in question. Given the arguments presented, provide a recommendation to the Zambian parliament.
2. Discuss the concept of 'working conditions' and elucidate why most workers in Zambia complain of 'poor working conditions.' What is the role of Trade Unions and the State in contributing to rights of the workers to dignified working conditions in Zambia?

**END OF EXAMINATION**

**UNIVERSITY OF ZAMBIA**  
**SCHOOL OF HUMANITIES AND SOCIAL SCIENCES**  
**DEPARTMENT OF SOCIAL WORK AND SOCIOLOGY**

**SDS 9110: HUMAN RIGHTS AND DEVELOPMENT**  
**2019/2020 ACADEMIC YEAR FINAL EXAMINATIONS**

**29<sup>TH</sup> DECEMBER, 2020. TIME: 09:00-12:00HRS**

**TIME: THREE (3) HOURS**

**INSTRUCTIONS: SECTION A IS COMPULSORY. ANSWER ANY TWO QUESTIONS FROM SECTION B.**

**SECTION A: COMPULSORY (10 MARKS)**

1. Write brief notes on any five of the following:
  - a) The best interests of the child (2 Marks)
  - b) Actors and human rights (2 Marks)
  - c) Universal human rights vs cultural relativism (2 Marks)
  - d) Absolute rights vs non-absolute rights (2 Marks)
  - e) Equality and non-discrimination (2 Marks)
  - f) Indivisibility of human rights (2 Marks)
  - g) Globalization of human rights (2 Marks)

**SECTION B: ANSWER ANY TWO QUESTIONS (40 MARKS)**

1. The Village Headman of Senzeni village in Katete District is concerned that his subjects are unaware about human rights. He has called you to help sensitize his people. What will you tell these citizens about sources of human rights, human rights principles and obligations of the State regarding civil, political, economic, social and cultural rights? How can State obligations be monitored and assessed?
2. You have been appointed to represent the Ministry of Community Development and Social Welfare at a conference in New York. Discuss the models of disability in relation to policy action in the Zambian context. In addition, explain (with relevant examples) the significance of disability mainstreaming and highlight the challenges facing Zambia in mainstreaming disability in the development Agenda.
3. In Zambia, corruption is increasingly recognized as a pervasive violation of fundamental human rights of citizens. In this regard, both Zambia and the international community have acknowledged the negative effects of corruption on the protection of human rights and achievement of sustainable human development. With the help of practical examples, discuss the impact of corruption on human rights and sustainable human development in Zambia. Further, discuss how human rights principles can help in fighting corruption in Zambia.
4. Zambia is said to be a democratic society that has a strong foundation on the principles of good governance. However, many political, social and institutional actors have questioned the practicality of good governance in Zambia. With the help of practical examples, critically discuss the practicality of good governance in Zambia. Further, discuss how good governance can enhance the protection of human rights in Zambia.

**BEST WISHES**

# THE UNIVERSITY OF ZAMBIA

SCHOOL OF HUMANITIES AND SOCIAL SCIENCES

DEPARTMENT OF SOCIAL WORK AND SOCIOLOGY

2019/2020 ACADEMIC YEAR EXAMINATION

SDS 9210: SOCIAL PROTECTION

DURATION: THREE HOURS

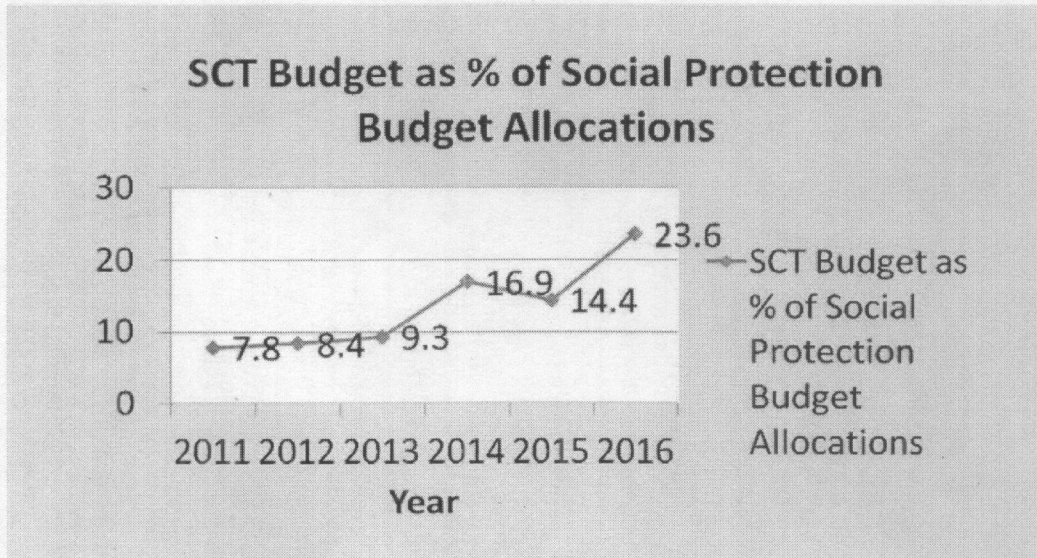
INSTRUCTIONS: This paper is divided into three sections. Section A is compulsory. Answer two (2) questions from Section B and five (5) from section C.

---

Section A: Compulsory (40 Marks)

1. Study the graph below and answer questions (a to e).

## Share of SCT budget as share of total social protection budget allocation



- a. Calculate the difference between SCT budgetary allocation between 2013 and 2014.
- b. With the aid of examples, explain sources of social protection financing.
- c. Elucidate the parameters that define the financing system for social protection.
- d. Explain the causes of low tax revenue collection in LMICs such as Zambia.
- e. Explain factors that influence resource allocation in social sector including social protection in Zambia. Provide possible explanation and justification on what could be

major reason for increased SCT budgetary allocation from 14.4 percent of the total social protection funds in 2015 to 23.6 percent in 2016.

**Section B: Answer one (1) question (30 marks)**

1. Discuss the following themes under targeting in social protection programmes:
  - a. Definition of targeting
  - b. Rationale for targeting
  - c. Targeting mechanisms
  - d. Errors in targeting
  - e. Cost of targeting
2. Discuss the relationship between social protection and economic growth
3. Explain informal and formal social protection systems in Zambia, and highlight challenges faced by informal social protection systems.

**Section C: Write brief notes on any five (5) of the following themes (30 marks)**

1. Public Welfare Assistance Scheme
2. Sustainable Development Goals (SDGs)
3. The Social Protection Floors
4. GRZ Bursary Scheme
5. School Feeding Programmes
6. FISP
7. Gini Coefficient

**END OF EXAMINATION**

THE UNIVERSITY OF ZAMBIA

END-YEAR EXAMINATIONS FOR 2019/20 ACADEMIC YEAR

SDS9215: PARTICIPATORY PLANNING MONITORING & EVALUATION

Cohort 2

TIME ALLOWED: THREE HOURS

INSTRUCTIONS:

1. Read and understand the project description given below before you proceed in answering the examination questions.
2. Answer all questions in Section I.
3. Answer any two (2) questions from Section II.

---

**SECTION I: ALL QUESTIONS ARE COMPULSORY. (50 MARKS)**

1. Define participatory planning; with the aid of practical examples discuss the 4 possible sources of authority for a planner as proposed by Martin Rein (25 Marks)
2. As succinctly as possible, explain any 5 of the following concepts to the government ministry in charge of constructing the roads in Lusaka (25 Marks).
  - a. Problem and Solution Tree Analysis
  - b. Techno-methodological approach to planning
  - c. Participatory monitoring
  - d. Community mobilisation
  - e. Authority of professional values

**SECTION II: ANSWER TWO QUESTIONS ONLY. (50 MARKS)**

**PROJECT DESCRIPTION:**

The Government of the Republic of Zambia has secured a loan facility from the African Development Bank. It intends to spend part of the loan on completing the ring roads around the Greater City of Lusaka. The benefit of this project is that it will improve access, road safety and economic activity. However, there are a few challenges that need to be resolved and managed. Among them are that the roads

THE UNIVERSITY OF ZAMBIA

END-YEAR EXAMINATIONS FOR 2019/20 ACADEMIC YEAR

SDS9215: PARTICIPATORY PLANNING MONITORING & EVALUATION

TIME ALLOWED: THREE HOURS

INSTRUCTIONS:

1. Read and understand the project description given below before you proceed in answering the examination questions.
  2. Answer all questions in Section I.
  3. Answer any two (2) questions from Section II.
- 

**PROJECT DESCRIPTION:**

The Government of the Republic of Zambia has secured a loan facility from the African Development Bank. It intends to spend part of the loan on completing the ring roads around the Greater City of Lusaka. The benefit of this project is that it will improve access, road safety and economic activity. However, there are a few challenges that need to be resolved and managed. Among them are that the roads will at some points pass through some private properties such as houses and farms; some of which are titled while others are not.

**SECTION I: ALL QUESTIONS ARE COMPULSORY. (50 MARKS)**

1. With examples from the above project, discuss how participatory planning and monitoring could help the government resolve the challenges identified above. (25 marks)
2. Discuss how planning, monitoring and evaluation reinforce each other. (25 marks)

**SECTION II: ANSWER TWO QUESTIONS ONLY. (50 MARKS)**

3. As succinctly as possible, explain any 5 of the following concepts to the government ministry in charge of constructing the roads in Lusaka (25 Marks).
  - a. Problem and Solution Tree Analysis
  - b. Techno-methodological approach to planning
  - c. Participatory monitoring
  - d. Community mobilisation
  - e. Authority of professional values
  
4. Define participatory evaluation. With the aid of a table illustrate the differences between participatory and conventional monitoring and evaluation. (25 marks)
  
5. List and discuss 5 purposes and/or uses of monitoring and evaluation (25 marks)
  
6. Discuss the benefits and challenges of implementing participatory monitoring and evaluation in a project such as the one above. (25 marks)

**END OF EXAMINATION**

**UNIVERSITY OF ZAMBIA**  
**SCHOOL OF HUMANITIES AND SOCIAL SCIENCES**  
**2019/2020 ACADEMIC YEAR FINAL EXAMINATIONS**  
**SOC 1110: INTRODUCTION TO SOCIOLOGY**

**TIME: THREE (3) HOURS**

**INSTRUCTIONS: PLEASE READ THE INSTRUCTIOS UNDER EACH SECTION CAREFULLY. ALL ANSWERS SHOULD BE WRITTEN IN THE OFFICIAL ANSWER BOOKLET**

---

**SECTION A: ANSWER ALL QUESTIONS IN THIS SECTION [30 MARKS]**

1. Which of the following statements is **TRUE** about deviance?
  - a. Deviant behavior is universal
  - b. Deviance is a manifest function of society
  - c. Deviance is exclusively negative for society
  - d. None of the above
  - e. All of the above
2. According to Max Weber, the central force in social change is....
  - a. Technology
  - b. Economics
  - c. Political authority
  - d. Religion
3. Which research method utilizes public records such as marriages certificates, police records and birth and death certificates?
  - a. Survey research
  - b. Secondary research
  - c. Primary research
  - d. Participant observation
4. A type of polygamy where a man is married to two or more wives who are customarily sisters is called?
  - a. Fraternal polyandry
  - b. Polygyny
  - c. Sororal polygyny
  - d. Polygamy
5. Children who are still sucking their thumbs when they enter kindergarten/preschool are often subjected to teasing and ridicule for this behavior. What type of social sanctions is applied in this instance?
  - a. Formal positive sanction
  - b. Formal negative sanction
  - c. Informal positive sanction
  - d. Informal negative sanction

6. According to the dependency theory, factors responsible for poor countries 'lack of development are internal?
  - a. True
  - b. False
7. Which of the following is **TRUE** about social institutions?
  - a. Social institutions are cultural universals
  - b. Social institutions are inter-reliant
  - c. Their repeated patterns and trends become codes of conduct
  - d. All of the above
  - e. None of the above
8. An unmarried women's decision to have a child is one of the key factors contribution to singlehood as a family form?
  - a. True
  - b. False
9. Marxism is the same as Communism?
  - a. True
  - b. False
10. Neolocal residence is where the newly married couple chose to live with either the wife's or husband's parents
  - a. True
  - b. False
11. "The Stages of Economic Growth: A Non-Communist Manifesto" is associated with which one of the following individuals:
  - a. Raul Prebisch
  - b. Walter Whitman Rodney
  - c. Andre Gunder Frank
  - d. Walt Whitman Rodney
12. According to the dependency theory underdevelopment in poor nations can be blamed on rigid cultural values and beliefs which economic progress in such countries:
  - a. True
  - b. False
13. Human development in society is a measure of non-economic aspects of development:
  - a. True
  - b. False
14. Which of the following is an example of downward intergenerational mobility?
  - a. A plumber whose father was a physician
  - b. A professional athlete who fails to find work after retirement
  - c. A bank teller who becomes a bar tender at a pub owned by her sibling
  - d. A police officer who becomes a newspaper vendor police officer
15. Which of the following is true about the ego according to Sigmund Freud?
  - a. It includes an individual's instinct
  - b. It is like a little angle
  - c. It operates according to the reality principle

- d. It operates according to the pleasure principle
16. Which of the following stories demonstrates the importance of nature in socialisation?
- The wild boy of Aveyrone
  - Gua and Donald
  - Isabelle
  - Anna
17. A relationship between or among variables is predicted by
- A hypothesis
  - Use of operational definitions
  - When the researcher selects the topic to be studied
  - When the researcher is analysing the results
18. Research which makes discoveries about life in human groups rather than make changes in these groups is
- Pure sociology
  - Applied sociology
  - Clinical sociology
  - Psycho sociology
19. According to Merton's strain theory, people who drop out of the pursuit of success by abusing alcohol or drugs are
- Rebels
  - Retreatists
  - Neurotics
  - Ritualists
  - Recidivists
20. Which of the following is not a major function of the family for society?
- Satisfying and regulating the desires of adults for intimate social and sexual relationships
  - Socialising the child
  - Providing appropriate goal displacement
  - Generating offspring
  - None of the above

---

**SECTION B: WRITE BRIEF NOTES ON ANY 15 OF THE FOLLOWING [30 MARKS]**

- Cultural relativism
- Fertility
- Voluntary migrants
- Third stage of the demographic transition
- Auguste Comte
- Poverty line
- Social change
- Social strata

9. Estate system
  10. Life chances
  11. Median income
  12. Intra-generation mobility
  13. Karl Marx
  14. Significant others
  15. Protestant ethic
  16. Virilocal
- 

**SECTION C: WRITE ON ANY TWO OF THE FOLLOWING [40 MARKS]**

1. Socialisation is a life-long process. Explain this in relation to the stages of the life course (childhood, adolescence, adulthood, and old age).
2. Discuss Robert Merton's structural strain theory and with practical examples in the Zambian context, show the extent to which it explains deviant behavior in Zambia.
3. Social institutions are both inevitable and irreplaceable in society. Discuss.
4. Describe social stratification and its value. Outline the nature, causes and maintenance of the systems of social stratification.

***END OF EXAMINATION***

**UNIVERSITY OF ZAMBIA**  
**SCHOOL OF HUMANITIES AND SOCIAL SCIENCES**  
**2019/2020 ACADEMIC YEAR DEFERRED EXAMINATIONS**  
**SOC 2110: CONTEMPORARY SOCIAL PROBLEMS**

**INSTRUCTIONS: PLEASE READ THE INSTRUCTIOS UNDER EACH SECTION CAREFULLY.**

**TIME: THREE (3) HOURS**

---

**SECTION A: ANSWER ALL QUESTIONS IN THIS SECTION. [10 MARKS]**

1. How does the amount of power that groups and individuals have help determine whether a situation in society is defined as a social problem? [2 Marks]
  2. Using a particular social problem as an example, illustrate how the functionalist perspective on social problems differ from the conflict perspective? [2 Marks]
  3. What is mental illness? Briefly explain why mental illness is referred to as a "hidden epidemic? [2 Marks]
  4. What is the sociological imagination? Briefly explain why it is important in the study of social problems. [2 Marks]
  5. Outline four problems which are encountered in the preparation of official statistics? [2 Marks]
- 

**SECTION B: WRITE BRIEF NOTES ON ALL OF THE FOLLOWING. [10 MARKS]**

1. C. Wright Mills argued that in order to have a full understanding of the social problems around us, we need to observe society more objectively, and seek insights into the social forces shaping our lives. Using the sociological imagination, briefly explain the development of violent youth gangs such as the Fluffy boys in Lusaka and the Tokota boys in Kitwe. [2 Marks]
2. Outline the various kinds of problems associated with population growth. Briefly explain suggestions you would give policy makers to control these problems. [ 2 Marks]

3. What is criminal law? Using examples from Zambia, list and briefly explain the characteristics and functions of criminal law. **[2 Marks]**
  4. List four reasons why it is important for any particular society to identify social actors in social problems. **[4 Marks]**
- 

**SECTION C: WRITE ON ANY TWO OF THE FOLLOWING [30 Marks]**

1. Discuss the functions of criminal law and indicate the extent to which this body of law has been effective in bringing social order in Zambia **[15 Marks]**
2. Using the COVID-19 outbreak in Zambia as a case, critically discuss the concept of social stratification and how it explains peoples' differential experiences of social problems in society **[15 Marks]**
3. According to the functionalist perspective, the family is an important institution to society, and it serves so many functions. But some scholars have argued that it is in fact becoming a very dangerous place for children and other members. With practical examples from Zambia, discuss whether you agree with these scholars or not. **[15 Marks]**

***END OF EXAMINATION***

**UNIVERSITY OF ZAMBIA**  
**SCHOOL OF HUMANITIES AND SOCIAL SCIENCES**  
**2019/2020 ACADEMIC YEAR FINAL EXAMINATIONS**  
**SOC 2110: CONTEMPORARY SOCIAL PROBLEMS**

**INSTRUCTIONS: PLEASE READ THE INSTRUCTIONS CAREFULLY.**

**TIME: THREE (3) HOURS**

---

**SECTION A: ANSWER ANY FOUR (4) QUESTIONS [100 MARKS].**

1. With practical examples, discuss the problem of sex related crimes in Zambia. In your discussion establish the social conditions in many societies that expose women and girls to domestic violence and abuse. [25 Marks]
2. With practical examples, critically explain the importance of official statistics in national policy and decision making in the country. What role do official statistics play in resolving social problems in society? [25 Marks]
3. Discuss the functions of criminal law and indicate the extent to which this body of law has been effective in bring social order in Zambia. [25 Marks]
4. One of the characteristics in the definition of social problems is that it is one that threatens our social institutions or values. Explain how a social problem such as xenophobic attacks in South Africa threatens society's well-being. [25 Marks]
5. According to the functionalist perspective, the family is an important institution to society, and it serves so many functions. But scholars from the conflict perspective have argued that it is in fact the most dangerous place for members of society. Briefly explain with practical examples from Zambia whether these scholars are right or wrong. [25 Marks]

**END OF EXAMINATION**

**THE UNIVERSITY OF ZAMBIA**  
**SCHOOL OF HUMANITIES AND SOCIAL SCIENCES**  
**DEPARTMENT OF SOCIAL WORK AND SOCIOLOGY**  
**END OF ACADEMIC YEAR EXAMINATIONS**

**2019/2020 ACADEMIC YEAR**

**SOC 3110: URBAN SOCIOLOGY**

**INSTRUCTIONS:**

- (i). ANSWER **FOUR** QUESTIONS **ONLY**
- (ii). TIME: 3 HOURS

**QUESTIONS.**

1. Apart from family planning methods, identify and discuss other methods of controlling over population or overurbanisation in cities and towns?
2. Apart from natural increase and migration, identify and discuss causes of rapid urbanization or population explosion in cities and towns?
3. Discuss the ways in which industrialization and urbanization have weakened the extended family system in both Advanced and Low Developed Countries?
4. In what ways can the urban transport system be linked to the well being of urbanites in any city in the world?
5. In what ways can international migration be a cost and benefit to any country today? Provide practical examples for your answer?
6. During the rise of towns and cities in Zambia, women faced challenges in finding employment in the formal sector. Discuss some of the challenges women have continued to face in modern times within urban areas particularly in the employment sector whether formal or informal sector? Suggest solutions to these problems identified?
7. In what ways would you say that divorce is beneficial and a cost to the divorcing parties and children? Provide practical examples for your answer?
8. What would you say are the social-economic factors behind the deterioration in urban health in most of the Cities and towns in Low Developed Countries?

**END OF EXAM**

**UNIVERSITY OF ZAMBIA  
SCHOOL OF HUMANITIES AND SOCIAL SCIENCES  
DEPARTMENT OF SOCIAL WORK AND SOCIOLOGY**

**2019 ACADEMIC YEAR FINAL EXAMINATIONS**

**SOC 3210: SOCIOLOGICAL THEORY**

**TIME: THREE HOURS**

**INSTRUCTIONS: THIS EXAMINATION COMPRISES THREE SECTIONS. READ THE INSTRUCTIONS IN EACH SECTION CAREFULLY.**

---

**SECTION A: Answer all the questions in this section (15 Marks)**

1. Behaviourists such as B.F Skinner, believe that if an individual's action elicits a negative response, he/she is less likely to repeat the action. Give a practical example related to behaviour among students at the University of Zambia to illustrate this statement.
2. In what type of exchange relations do power differentials emerge according to Peter Blau?
3. Which of the following does not apply to Ulrich Beck's risk society?
  - a) Modernity reduces the overall riskiness of life
  - b) Modernity introduces new risks
  - c) Risks inversely follow patterns of inequality in society
  - d) Money and modernity have adverse consequences on social life
  - e) None of the above
4. Distinguish Robert Merton's idea of middle range theories from Talcott Parsons' grand theories.
5. Do you agree with Lewis Coser's view that it is important for society to provide safety valves for the release of hostilities?

**SECTION B: Write brief notes on any five concepts below (15 Marks)**

1. Functional alternatives
2. Collectivity Vs self-orientation
3. Dramaturgy
4. Self-interaction
5. George Homans' value proposition
6. Trust and reciprocity in social exchange
7. 'The tragedy of culture'

8. The dialectic
9. *Sui generis*
10. The first wisdom of sociology

**SECTION C (ESSAYS): Answer two questions from the questions below (20 Marks)**

1. In relation to the development of the self, contrast the ideas of Charles H. Cooley from those of George H. Mead.
  2. Using practical examples, explain the circumstances under which social conflict can lead to cohesion and when it can be disruptive according to Lewis Coser.
  3. Emile Durkheim believed that suicide varies according to two key factors: the degree of integration one has; and the degree of social regulation in society. Explain in relation to the four types of suicide that Durkheim was able to identify from these factors.
  4. Outline Talcott Parsons' pattern variables and show how it is possible for more than one pattern variable under the instrumental category to occur at the same time, and those under the expressive category to also occur at the same time. Explain using examples from Zambian society.
- 

**END OF EXAMINATION**

**THE UNIVERSITY OF ZAMBIA**  
**SCHOOL OF HUMANITIES AND SOCIAL SCIENCES**  
**2019/2020 ACADEMIC YEAR FINAL EXAMINATION**

**SOC 9010: INDUSTRIAL SOCIOLOGY**

**TIME: THREE HOURS**

**INSTRUCTIONS:**

1. There are two sections in this paper. You are required to answer questions from each section as required.
  2. Write your computer number as required.
  3. All your answers should be in the prescribed examination answer books.
- 

**SECTION A**

Write brief notes on any **TEN** of the following (40 marks):

1. Douglas McGregor's Motivation Theory X assumptions and how managers should manage workers on the basis of this theory.
  2. Advantages and disadvantages of Taylor's Scientific Management Theory.
  3. Programmed decision making and non-programmed decision making.
  4. Planning, its functions and benefits.
  5. List and briefly describe the four management functions.
  6. Differences in the behavior of Japanese and American organisations according to William Ouchi.
  7. Redundancy and the principles of first in last out and last in first out.
  8. ILO Declaration of Philadelphia.
  9. Consolidated accounts, current liabilities and interlocking directorates.
  10. Tenets of Capitalism and Socialism.
  11. Power and authority and the three sources or types of authority according to Weber.
  12. Industry, Commodity, and Commodity production.
  13. Contract and breach of Contract.
  14. Benefits of Industrial relations.
  15. Law of supply and demand and inflation.
  16. ILO Conventions 87, 98 and 100.
-

**SECTION B: ANSWER ANY THREE OF THE FOLLOWING QUESTIONS (60 MARKS)**

1. Outline the main principles or features of Weber's Bureaucratic Management as well as Taylor's Scientific Management and critically discuss their merits and demerits in the operational efficiency of industry. (20 marks)
2. Define Collective dispute according to Zambian law and outline the process for resolving such disputes. Include any challenges that may be faced during the process. (20 marks)
3. ADR offers a better system of dispute resolution as compared to litigation. Critically discuss the authenticity of this statement with examples. (20 marks)
4. Outline the differences between the traditional society and the modern industrial society and explain why there is a steady and sustainable movement toward the industrial society and with what socio-economic effect. (20 marks)
5. Good and functional industrial relations require more than the provision of a good salary. Discuss this statement with the support of examples and theories. (20 marks)

---

**END OF EXAMINATION**

**SCHOOL OF HUMANITIES AND SOCIAL SCIENCES  
SOC 9155**

**DISASTER MANAGEMENT 2020 EXAMINATION**

**TIME 3 HOURS**

***Instructions***

This paper is composed of two sections. Follow instructions under each section

**SECTION A**

**Q1: Write shorts on any four of the following: (10 Marks)**

- a) Tectonic disasters (2.5 marks)
- b) Disaster risk (2.5 marks)
- c) Approaches to disasters (5 marks)
- d) Capacity (2.5 marks)
- e) Domains of disaster vulnerability (2.5 marks)
- f) Resilience (2.5 marks)
- g) Rehabilitation and disasters (2.5 marks)
- h) Five types of myths (2.5 marks)

**Section B Answer all Questions**

The COVID-19 pandemic conforms to key baseline conclusions which have emerged from infections over past decades. First, that natural disasters rarely exist, because disasters are social, arising from a combination of hazard and vulnerability, with vulnerability as the causative factor. Second that the disaster occurs at multiple levels simultaneously, with responses to a hazard exposing as many vulnerability problems as the original hazard. The COVID 19 was not declared as disaster in Disaster. There has been so much debate about the declaration and non-declaration.

- 1) What is your position regarding COVID 19 whether it qualifies as a disaster or not and state sousing disaster parameters based on the Zambian definition? (5 Marks)
- 2) If COVID 19 was to be declared as a disaster in Zambia, what was supposed to be the procedure? (5 Marks)
- 3) Your lecturer has a position that COVID 19 was a catastrophe in the US and Italy. What is your position that it was or it was not. Argue for or against while giving examples. (5 Marks )
- 4) Discuss the current challenges in managing disasters. What strategies can be employed to combat disasters internationally? (5 Marks)

- 1) Someone argued that COVID 19 was a complex disaster in Zambia. If you agree or disagree with this position, what should have counted as a complex disaster or what does not count as a complex disaster? **(5 Marks )**

Your lecturer seems to be old fashioned and knows little about disasters. He looks at what the Zambian Government did and noted the following. The Government through the Ministry of Finance proposed a number of measures which included among others: Setting up an Epidemic Preparedness Fund under the Ministry of Health amounting to K57 million; Cabinet approving a COVID-19 Contingency and Response Plan with a budget of K659 million under the Disaster Management Unit. Closing all public institutions especially schools and colleges, advising civil servants to work from home, restricting burials and visits at funeral homes to 20 to 50 people. In June, the government opened up colleges to handle graduating students and recently a phased approach was adopted while bars remain open on Friday and weekends.

- 1) Looking at the disaster continuum, identify and classify these actions accordingly. **(10 Marks )**
- 2) During the pandemic, there were social effects. Classify at least five effects under each of the following micro, meso and macro levels. **(15 Marks )**

**END OF EXAMINATION**

**UNIVERSITY OF ZAMBIA  
SCHOOL OF HUMANITIES AND SOCIAL SCIENCES  
DEPARTMENT OF SOCIAL WORK AND SOCIOLOGY**

**2019 ACADEMIC YEAR FINAL EXAMINATIONS**

**SOC 9210: SOCIAL CHANGE AND DEVELOPMENT**

**TIME: THREE HOURS**

**INSTRUCTIONS: THIS EXAMINATION COMPRISES THREE SECTIONS. READ THE INSTRUCTIONS IN EACH SECTION CAREFULLY.**

---

**SECTION A: Answer all the questions in this section (10 Marks)**

1. Distinguish contemporary global social networks from those of the past.
2. You can think about change in terms of significant social events; the institutional settings in which it occurs; and.....
3. Which one of the following does not fit in?
  - a) Tonnies' theory of change from *Gemeinschaft* to *Gesellschaft*
  - b) Pitirim Sorokin's theory involving change between "idealism" and "materialism"
  - c) Redfield's theory about the transition from "folk" to "urban" societies
  - d) Durkheim's theory of the transition from "mechanical" to "organic" solidarity
  - e) None of the above
4. In relation to the definition of social change, the change involved must be observed in both the social structure and the behavioural or cultural patterns of society. Give an example to illustrate this (not one given in class).
5. After successfully embarking on economic reforms in the 1990s and early 2000s Zambia reached the Highly Indebted Poor Countries) HIPC completion point and had a large portion of its foreign debt written off. About 15 years later, the country is another economic crisis with a huge debt. Which pattern of social change can be used to explain the scenario above? Explain to justify your answer.

**SECTION B: Write brief notes on any five concepts below (10 Marks)**

1. Labour underutilisation
2. Dialectical models of social change
3. Nationalisation

4. Ethnic relations in Zambia b
5. Market driven economy
6. Time frame and scope of social change
7. The Brandt Commission
8. Cultural trends
9. Contemporary conflict theories of social change
10. The service economy

**SECTION C (ESSAYS): Answer two questions from the following (20 Marks):**

1. With reference to the sources of dependency listed below, explain the development challenges that poor countries like Zambia face.
  - a) *Nature of world markets for the commodity products of the developing countries*
  - b) *Debt trap*
  - c) *Multinational corporations*
  - d) *Extraverted economies*
2. With reference to change that has taken place in any group, organization, community or town which you are familiar with, explain the interplay between structure and human agency as causes of change.
3. Explain how birth cohorts influence change in society.
4. Describe the different stages of human development according to Gerhard Lenski. Do you agree with his assertion that industrial societies are more egalitarian than agricultural societies? Discuss in the light of Zambian rural and urban societies.
5. Contrast the world system theory from developmentalist perspectives in relation to their explanations of failed development in developing countries.

---

**END OF EXAMINATION**

THE UNIVERSITY OF ZAMBIA  
SCHOOL OF HUMANITIES AND SOCIAL SCIENCES  
DEPARTMENT OF SOCIAL WORK AND SOCIOLOGY  
2019/2020 ACADEMIC YEAR FINAL EXAMINATIONS

**SOC 9255: CRIMINOLOGY**

INSTRUCTIONS:

16<sup>th</sup> December, 2020

1. **Question one (1) in Section A is compulsory. Choose any other four (3) questions from Section B**
2. . Indicate clearly in your answer booklet the question you have chosen.
3. Time allowed: **Three (3) Hours**

**SECTION A: THIS SECTION IS COMPULSORY**

1. Using appropriate examples, write short and concise notes on **any five (5)** of the following: **(25 Marks)**
  - a) Why criminology is dominated by the sociological perspective
  - b) The usefulness of crime according to Emile Durkheim
  - c) Deterrence
  - d) Capital Punishment
  - e) The relationship between criminology and criminal law
  - f) Parole
  - g) Transitional zone
  - h) Attachment according Travis Hirschi

**SECTION B: ANSWER ANY THREE QUESTIONS IN THIS SECTION**

2. With the aid of practical examples, use a relevant theory to explain why environmental settings are said to be the catalyst for the crime problem in any given society. **(25 Marks)**
3. Using Robert Merton's (1969) Strain Theory, explain how you think the Global Pandemic Covid-19 has strained livelihoods in Zambia in different ways and has exacerbated the crime problem. **(25 Marks)**
4. What do you understand by Atavistic stigmata? Further, with the aid of practical examples from Zambia and any criminological theory or theories of your choice on crime causation, critically discuss the notion advanced by Cesare Lombroso that criminals are simply born that way. **(25 Marks)**
5. State and explain using concise notes the three elements of personality as advanced by the psychoanalytic perspective. Further, name the scholar associated with the perspective and explain with the aid of practical examples the etiology of crime according to the psychoanalytic perspective. **(25 Marks)**
6. You are a Senior Crime Statistician in the Police Department in your country and you have been requested by the Southern Africa Development Community (SADC) Regional Bureau in Harare to submit an Annual Crime Report for your country for the year ending December, 2020. State the most reliable tool or strategy you would use to collect your crime data. Further, explain the strengths and weaknesses associated with the tool. Additionally, use a criminological imagination to briefly explain the relevance of accurate crime statistics in your country. **(25 Marks)**

**UNIVERSITY OF ZAMBIA**  
**SCHOOL OF HUMANITIES AND SOCIAL SCIENCES**  
**2019/2020 ACADEMIC YEAR FINAL EXAMINATIONS**  
**SOC 9415: ENVIRONMENTAL SOCIOLOGY**

INSTRUCTIONS : ANSWER ANY FOUR QUESTIONS IN THE PAPER.  
TIME : 3 HOUR

---

1. Environmental sociology argues that environmental problems are social problems, with reference to the following sociological perspectives explain how environmental problem come into existence: *(25 Marks)*
  - (i) Functionalist perspective
  - (ii) Feminist perspective
  - (iii) Interactionist perspective
2. The '1992 Earth Summit' in Brazil ended with the signing of three major international agreements on the environment. What were they and what were the main objectives of each one of them *(25 Marks)*.
3. What is meant by Environmental Impact Assessment (EIA)? Discuss the process of conducting an EIA, and why such a process is important *(25 Marks)*.
4. What is environmental degradation? Using Zambia as an example, discuss the various factors that may be responsible for environmental degradation *(25 Marks)*
5. Discuss the relationship between 'environmental sustainability and sustainable development?' What is the genesis of the concept of 'sustainable development' *(25 Marks)*.

**END OF EXAMINATION**

**UNIVERSITY OF ZAMBIA**  
**SCHOOL OF HUMANITIES AND SOCIAL SCIENCE**  
**DEPARTMENT OF SOCIAL WORK AND SOCIOLOGY**  
**2020 ACADEMIC YEAR**  
**FINAL EXAMINATION**

**COURSE: SOC 9510 - SOCIOLOGY OF  
ORGANIZATION AND LEADERSHIP**

**INSTRUCTIONS: : PLEASE ANSWER ALL QUESTIONS IN  
SECTION A AND ONLY THREE QUESTIONS  
IN SECTION B AND C (EITHER 2 QUESTIONS  
IN SECTION B AND ONE QUESTION IN  
SECTION C OR VICE VERSA)**

**TIME: THREE HOURS**

---

**SECTION**

1. State briefly problems of the commonweal organizations?
2. What are the advantages and disadvantages of a functional structure
3. What is the relationship between character and integrity?
4. Briefly state the muddling through involves
5. Which comes first between formal organizations and informal organizations and why is it so?

**SECTION B**

1. Why could the human relations approach be called a significant turning point organizations' history? How did McGregor help focus needed attention on the "human factor"?
2. Decisions are dependent on the amount and kind of information available and the expectations of those involved. Discuss

3. The Human Relations School developed as a reaction to Classical Organization theory. Demonstrate the similarities and differences of the two schools of thought.
4. Briefly outline Weber's Ideal type of organization. How useful is this type of organization in explaining and improving organizations in Zambia.

### SECTION C

1. Peter Drucker stated in one of his publication that, "The essence of a business is outside itself". What do you think this means? Do you agree with this statement or not.
2. What are the major forces that affect organization environment relationship? Describe those forces.
3. Discuss the different forms of organization culture that you know with relevant examples in Zambia.
4. Discuss the organization development assumptions that you know and give examples.

END OF EXAMINATION

**UNIVERSITY OF ZAMBIA**  
**SCHOOL OF HUMANITIES AND SOCIAL SCIENCE**  
**DEPARTMENT OF SOCIAL WORK AND SOCIOLOGY**  
**2020 ACADEMIC YEAR**  
**FINAL EXAMINATION**

**COURSE: SOC 9610 - RURAL SOCIOLOGY AND  
DEVELOPMENT**

**INSTRUCTIONS: : PLEASE ANSWER ALL QUESTIONS IN  
SECTION A AND ONLY THREE QUESTIONS  
IN SECTION B AND C (EITHER 2 QUESTIONS  
IN SECTION B AND ONE QUESTION IN  
SECTION C OR VICE VERSA)**

**TIME: THREE HOURS**

---

**SECTION A**

1. State the vicious circle of poverty in rural areas.
2. State any indicators of rural poverty you know.
3. State briefly the linkage you see in the basic social institutions you know?
4. Briefly discuss the concept of social process?
5. State briefly why rural sociology is an applied science?

**SECTION B**

1. Discuss the relevance of social institutions that are found in rural societies.
2. Discuss the various human factors that drive, influence and affect social change at the various levels (such as at global, regional, national and local levels).
3. Why is a study of rural society not complete without looking at culture? Discuss
4. Rural sociology as social science discipline is one of the newest social science. Discuss its origin and how it contributes to nation development.

## SECTION C

1. Do villages in Zambia qualify to be called communities? Share this by looking at what factors enhance community building as well as factors that act as barriers for community building.
2. What role did co-operatives play in rural development in the 1<sup>st</sup> and 2<sup>nd</sup> Republics that is from 1964 to 1990 and compare with the period of 1991 to 2001.
3. Why is it necessary to the process of rural development to do a structural analysis of society before launching a project in rural areas? Show this with good examples.
4. Rural poverty is difficult to define but when you see it you know it. Discuss why this is so by giving examples in Zambia.

END OF EXAMINATION

# THE UNIVERSITY OF ZAMBIA

## SCHOOL OF HUMANITIES AND SOCIAL SCIENCES DEPARTMENT OF SOCIAL WORK AND SOCIOLOGY

SOC 9755 SOCIOLOGY OF HEALTH AND ILLNESS EXAMINATION

DURATION: THREE HOURS

DATE: Thursday 24<sup>th</sup> December, 2020

### INSTRUCTIONS:

This paper has TWO Sections (Section A and B). You are required to answer ONE question from Section A and any other TWO questions from Section B. The questions in each section carry equal marks.

---

### SECTION A

1. Social Epidemiologists play an important role in the health sector. Imagine you have been employed at the University Teaching Hospital as a Social Epidemiologist, explain the process that you would use to reduce the spread of both human and zoonotic diseases in Zambia (30 Marks)
2. The Health Belief Model advocates for both health behaviour and illness behaviour. Discuss these two behaviours in light of what an individual is compelled to do in order to avoid chronic diseases as well as reduce the effects of chronic diseases when they occur. Give empirical examples to support your answer (30 Marks)

### SECTION B

1. Epidemiologists seek to understand the determinants and the distribution of diseases in society. Using a disease of your choice, discuss some of the questions they are likely to ask in order to understand that disease and **four** factors that they are likely to consider as determinants of the spread of that disease. Use practical examples to support your argument. (10 Marks)
2. There are distinctive features between Sociology of Medicine and Sociology in Medicine. What are these? Are there any areas of convergence? Discuss (10 marks)
3. Labelling is said to be functional and dysfunctional. Describe how this may be so in five ways in either case. (10 marks)

**End of examination**

**UNIVERSITY OF ZAMBIA**  
**SCHOOL OF HUMANITIES AND SOCIAL SCIENCES**  
**2019/2020 ACADEMIC YEAR FINAL EXAMINATIONS**  
**PHASE TWO**

**SOC 9855: POLICY, PROGRAMS AND PROJECTS FOR DEVELOPMENT**

**INSTRUCTIONS:** ANSWER ANY FIVE QUESTIONS IN THE PAPER. ALL  
QUESTIONS CARRY EQUAL MARKS

**TIME:** THREE (3) HOURS

---

1. What is a project? State and briefly explain the typical characteristics of a project *(20 Marks)*
2. What is meant by a *project cycle* in project management? Which components are included in the cycle *(20 Marks)*
3. Outline and discuss the types of indicators that are used in project management. With practical examples, explain the most appropriate method of formulating indicators *(20 Marks)*
4. Briefly explain what public policy is all about and state what is involved in the public policy cycle *(20 Marks)*
5. What is a Project Planning Matrix (PPM) or Logical Framework (log frame)? State and explain all the components that are included in the matrix. What is “logical” about it? *(20 Marks)*
6. What is meant by Needs Assessment? At what stage in project management is needs assessment carried out? What type of needs can this exercise take into consideration *(20 Marks)*.
7. Briefly explain *Project monitoring and evaluation* in relation to the following aspects *(20 Marks)*:
  - (i) Purpose
  - (ii) Focus
  - (iii) Responsibility
8. Which one of the following categories of stakeholders would exert more influence on a project than the other? Explain the reasons *(20 Marks)*:
  - (i) Primary stakeholders
  - (ii) Secondary stakeholders

**END OF EXAMINATION**

**SCHOOL OF HUMANITIES AND SOCIAL SCIENCES  
SOC 9950**

**SOCIAL IMPACT ASSESSMENT EXAMINATION**

**2019/2020 ACADEMIC SESSION**

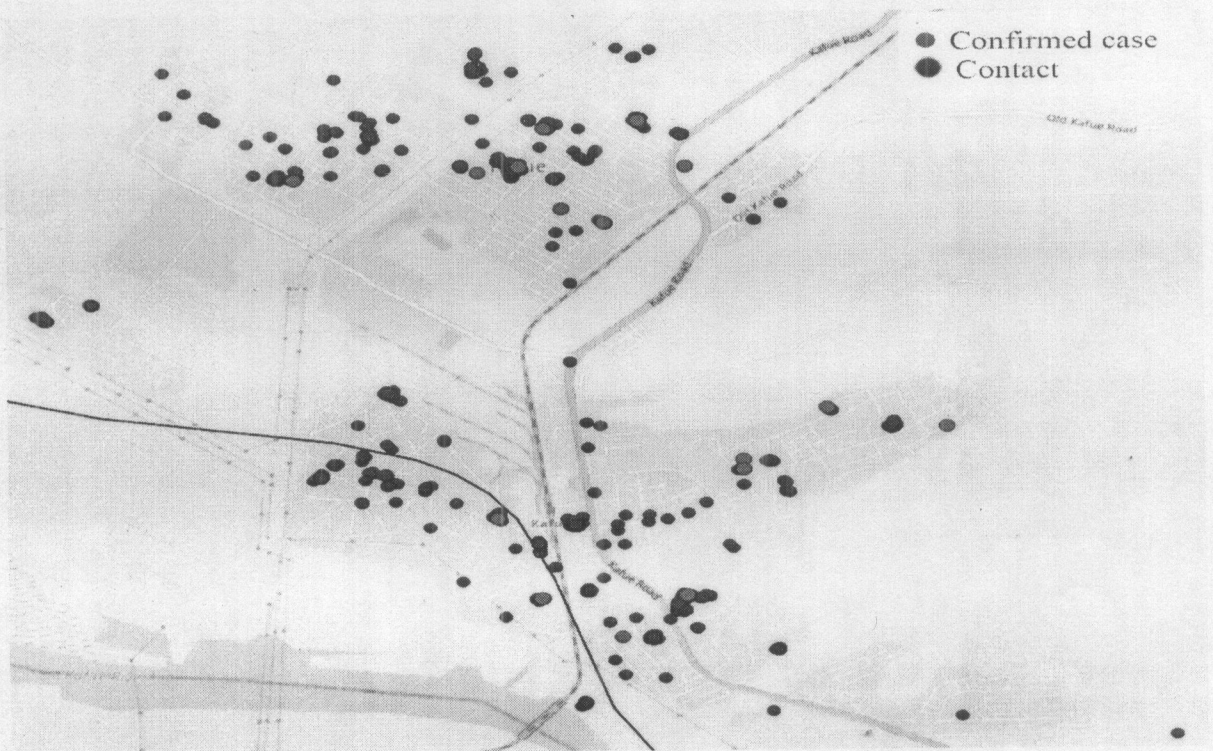
**TIME 3 HOURS**

***Instructions***

This paper is composed of two sections. Follow instructions under each section

**Section A. Answer all Questions**

In the early COVID 18 days, the Government imposed a 7 days lockdown in Kafue, as part of measures to curb the spread of the coronavirus. This was after sixteen cases were identified amid fear that the disease would spread to the capital city of Lusaka and the Southern parts of the country (see vignette).



During the lockdown period, both private and public employees were asked to work from home, while movements into and out of town were banned with the exception of those having health reasons or other considerable situations.

## Questions

**Question 1.** The government ought to have employed the American approach and instead settled for French approach. What five reasons could have influenced the government to employ the French approach? **(5 Marks)**

**Question 3.** The opposition championed by a lecturer of SIA at UNZA criticised this move on the basis that core values were ignored when making the policy decision. List only five core values **(10 Marks)**.

**Question 4.** This lockdown had negative impacts. Outline any 10 impacts based on impact typology and ensure that you use the following heuristics Population Characteristics, Community and Institutional Structures, Community Resources, Political and Social Resources and Individual and Family Changes. **(10 Marks)**

**Question 5.** There was no planning done by the Disaster Management Unit and the Ministry of Health to mitigate the impacts. There are some beneficiaries who could have been identified for compensation in kind. List five such beneficiaries and describe what one form benefit each one of these beneficiaries could have gotten **(10 Marks)**.

## SECTION B

**Q6: Write shorts on any five of the following: 25 Marks**

- a) Social impact assessment as a political process **(5 marks)**
- b) Cost benefit analysis **(5 marks)**
- c) Disadvantages of the American Tradition **(5 marks)**
- d) Scoping **(5 marks)**
- e) Main phase **(5 marks)**
- f) Needs Assessment **(5 marks)**
- g) Exploratory appraisals **(5 marks)**
- h) Forecasting **(5 marks)**

**END OF EXAMINATION**



THE UNIVERSITY OF ZAMBIA  
SCHOOL OF HUMANITIES AND SOCIAL SCIENCES  
DEPARTMENT OF SOCIAL WORK & SOCIOLOGY  
PROGRAMME: FULL TIME  
December 2020

**SWK 1110: INTRODUCTION TO SOCIAL WORK & SOCIAL WELFARE**  
**Final Examination**

---

**INSTRUCTIONS: Choose Any Two Questions from Section A. Section B Is Compulsory. DURATION: 3 HOURS**

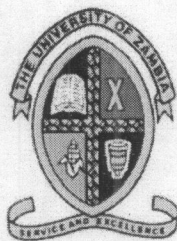
**SECTION A: WRITE BRIEF NOTES ON ANY FIVE OF THE FOLLOWING (20 MARKS)**

1. Social Work Values
2. Social Case Work
3. Theory
4. Poverty
5. Social Welfare
6. Conservatives
7. Self determination
8. Indigenous knowledge

**SECTION B: Compulsory 30 MARKS**

List and discuss six ethical standards that professional social workers must follow. Why is it important for social workers to follow these standards?

**GOOD LUCK**



THE UNIVERSITY OF ZAMBIA  
SCHOOL OF HUMANITIES AND SOCIAL SCIENCES  
DEPARTMENT OF SOCIAL WORK & SOCIOLOGY

SWK 2110: CONTEMPORARY ISSUES IN SOCIAL POLICY

---

Final Examination

December 2020

INSTRUCTIONS

Answer FIVE from Section A. Section B is Compulsory.

SECTION A: WRITE BRIEF NOTES ON ANY FIVE OF THE FOLLOWING (20 MARKS)

1. Wellbeing
2. Agenda setting
3. Social determinants of health
4. Third way
5. Sustainable livelihoods
6. Pull and push factors in migration

SECTION B: COMPULSORY (30 MARKS).

7. Using Zambia as an example, discuss the role of politics in the mixed economy of welfare.

GOOD LUCK

**THE UNIVERSITY OF ZAMBIA**  
**SCHOOL OF HUMANITIES AND SOCIAL SCIENCES**  
**DEPARTMENT OF SOCIAL DEVELOPMENT STUDIES**  
**SWK 2320: SOCIAL WORK METHODS**  
**2019/2020 ACADEMIC YEAR**

---

**TIME ALLOWED: 3 HOURS**

**Instructions:**

The paper has **TWO** sections, **Section A** is multiple choice answer **ALL**, and **Section B** long essay answer **THREE**.

**SECTION A:** Answer all the questions in your **Answer Booklet**. Each question carries 4 marks x 10 = 40 marks.

1. Which social work method would be the most appropriate to work with cancer patients?
  - A. Community organisation
  - B. Social casework
  - C. Social action
  - D. Social group work
  - E. None of the above
  
2. Which one of the leadership styles is the best when working with women?
  - A. Autocratic
  - B. Democracy
  - C. Laissez-Faire
  - D. Free Rein Leadership
  - E. None of the above

3. The personality of being wasteful can be traced to which stage in the psychosexual theory
  - A. Anus
  - B. Phallic
  - C. Oral
  - D. Puberty
  - E. None of the above
  
4. Which theory works on the assumption that, if one member of the family is hurt then the whole family is dysfunction?
  - A. Transaction analysis theory
  - B. Group theory
  - C. Systems theory
  - D. Crisis theory
  - E. None of the above
  
5. Which of the scholar below is associated with social case work?
  - A. Erikson
  - B. Biestek
  - C. Berne
  - D. Freud
  - E. None of the above
  
6. In social group work, the focus of a group leader is the development of .....
  - A. a community
  - B. a group
  - C. an individual
  - D. him/herself
  - E. None of the above
  
7. A Constituency is an example of .....community.
  - A. Relational based
  - B. Interest based
  - C. Spatial based
  - D. Rural based
  - E. None of the above
  
8. Transactional Analysts will pay attention to all of the cues including non-verbal cues when analyzing a transaction and identifying which ego states are involved. According to Dr. Mehrabian what percentage is represented by facial expression?
  - A. 7%
  - B. 55%
  - C. 38%
  - D. 40%
  - E. None of the above

9. Which one of the following is a function of a community according to Warren (1974)?

- A. Social integration
- B. Mutual support
- C. Community empowerment
- D. Self help
- E. None of the above

10. Which one of the following is **NOT** one of the stages of social action?

- A. Organising
- B. Problem Identification
- C. Strategy development
- D. Action stage
- E. None of the above

**SECTION B: Answer any THREE questions (60 marks)**

1. Discuss functions of a community and the benefits that come with participation of the local people in their own development. **(20 marks)**
2. Discuss social group work in terms of its development, leadership styles and benefits. **(20 marks)**
3. Social casework is described as a professional relationship between a casework and a client. With practical examples, discuss principles that hold this relationship together. **(20 marks)**
4. Outline Freud's psychosexual theory, identify the major conflicts at each stage and suggest how they could be resolved in order for children to develop acceptable personality. **(20 marks)**
5. Rationalise the relevance and the uses of research to a social worker and society as a whole. **(20 marks)**
6. Discuss the assumptions, strengths and limitations of the transactional analysis in social treatment. **(20 marks)**

**END OF EXAMINATION**

**THE UNIVERSITY OF ZAMBIA**  
**SCHOOL OF HUMANITIES AND SOCIAL SCIENCES**  
**DEPARTMENT OF SOCIAL WORK AND SOCIOLOGY**

**2019/2020 ACADEMIC YEAR EXAMINATIONS**

**SWK 2430: SOCIAL WORK AND LAW**

**INSTRUCTIONS:** This paper has **two sections**. Carefully read instructions for each section.

**SECTION A: COMPULSORY (40 Marks)**

1. As a social welfare officer, you have processed a juvenile court case involving Kalukumune Kalunsete (aged 15 years) who committed a felony (murder). With the help of relevant laws, discuss the following:
  - a) The role of social workers (social welfare officers) in juvenile justice administration. (8 marks)
  - b) The regulations when proceedings involve a juvenile in need of care. (8 marks)
  - c) Circumstances when Juvenile courts may order a juvenile offender to serve a term of probation (6 marks)
  - d) Diversion Measures (8 marks)

**SECTION B: ANSWER ONLY TWO (2) QUESTIONS (60 Marks)**

1. Write brief notes of **only six (6)** of the following: (30 Marks)
  - a) Juvenile in Need of Care (5 marks)
  - b) Juvenile Justice System (5 marks)
  - c) International Human Rights Law (5 marks)
  - d) International Humanitarian Law (5 marks)
  - e) Rule of Law (5 marks)
  - f) Alternative Care for children (5 marks)
  - g) Restorative Justice (5 marks)
  - h) Adoption Vs. Foster Care (5 marks)
  - i) Juvenile Justice (5 marks)
  - j) Juvenile Delinquency (5 marks)
2. John Cena Banda is a social work graduate from the University of Zambia. During his undergraduate studies, Cena did not take social work and law since the course had not been introduced. He therefore asks you to discuss the role of law in social work practice and administration. Furthermore, discuss how laws and ethics may conflict in social work practice. Additionally, discuss the link between human rights and ethics (ethical principles) in social work practice. (30 Marks)
3. Social work strives to promote social justice and human rights. However, non-observance of the rule of law would affect the attainment of social justice and human rights. Discuss how non-observance of the "rule of law" would affect the attainment of social justice and human rights in Zambia. Further, discuss how social work can promote social justice and protect fundamental human rights in society. (30 Marks)

**END OF EXAMINATION**

THE UNIVERSITY OF ZAMBIA  
SCHOOL OF HUMANITIES AND SOCIAL SCIENCES  
DEPARTMENT OF SOCIAL WORK AND SOCIOLOGY

SWK 2430: SOCIAL WORK AND LAW

2019 ACADEMIC YEAR FINAL EXAMINATIONS

TIME: THREE HOURS

*INSTRUCTIONS: SECTION A IS COMPULSORY AND ANSWER TWO QUESTIONS FROM SECTION B*

**SECTION A: COMPULSORY (10 MARKS)**

1. Write brief notes on **any Five** of the following:
  - a) Family group conferencing
  - b) Adoption
  - c) Intimate partner violence
  - d) Deprivation of Liberty
  - e) Family reintegration
  - f) Child protection vs safeguarding

**SECTION B: ANSWER ANY TWO QUESTIONS FROM THIS SECTION (40 MARKS)**

1. In relation to child protection and safeguarding answer the following question
  - a) Define the concept of child protection (5 Marks)
  - b) Identify and explain child protection issues in Zambia (5 Marks)
  - c) Identify and explain key components of a child protection system (5 Marks)
  - d) Discuss appropriate child protection interventions for child maltreatment (7 marks)
2. In relation to family separation
  - a) Explain the difference between family reunification and reintegration (3 marks)
  - b) With practical examples from Zambia, identify and discuss 5 risk factors of Family separation (5 marks)
  - c) With practical examples discuss the role of a social workers in Family reintegration (5 marks)
  - d) Discuss reintegration process in Zambia (7 marks)
3. In relations to the administration of juvenile justice in Zambia
  - a) Explain the concept diversion regarding (3 marks)
  - b) Using practical examples, identify and discuss the diversions options available in Zambia (5 marks)
  - c) Discuss the diversion process and pathways in Zambia (5marks)
  - d) Discuss the practicality of restorative justice in Zambia (7 marks)

**END OF EXAMINATION**



**THE UNIVERSITY OF ZAMBIA  
SCHOOL OF HUMANITIES AND SOCIAL SCIENCES  
DEPARTMENT OF SOCIAL WORK AND SOCIOLOGY**

**SWK 3221: SOCIAL WORK RESEARCH METHODS - 2019/2020 ACADEMIC  
YEAR**

**INSTRUCTIONS:**

1. Section A and C are compulsory. Choose any other **four questions** from section B
  2. Indicate clearly in your answer booklet the questions you have answered
  3. Time allowed: Three hours
- 

**Section A: Answer all Questions**

1. Prof. Themba said that social science cannot be value neutral, and a good study requires putting results into action to help people change society. Prof Themba uses which approach to social science?
  - a. Positivism
  - b. Interpretative Social Science
  - c. Critical Social Science
  - d. None of the above
2. Prof Niza conducted an experiment in which he tested the theory that the intensity of social interaction among people increases if they are anxious. What type of study is this most likely to be?
  - a. Cost Benefit Analysis
  - b. Explanatory Research
  - c. Content Analysis
  - d. Exploratory Research
3. For the positivist approach to research, a theory looks like:
  - a. A series of positive statements about the world.
  - b. A logical system of laws, axioms, and propositions.
  - c. A critique which claims that people are being misled.

4. In exploratory research one does all of the following, EXCEPT:

- a. Become familiar with the basic facts, people and concerns involved.
- b. Generate many ideas and develop tentative hypotheses.
- c. Determine the feasibility of doing additional research.
- d. Test a theory or explanation.

5. Prof Thokozani wanted to study the cause for thousands of people from villages moving to Lusaka. In order to establish temporal order in his causal argument he must show which of the following:

- a. There is a correlation between events in villages and a decision to move.
- b. Events occurred in villages before people moved to Lusaka.
- c. A fear for the future of villages and no other reason caused the move to Lusaka.
- d. All of the above.

6. Social research methods include all of the following, except:

- a. Surveys
- b. Therapy
- c. Experiments
- d. Interviews

7. Tiszah conducted a study of gambling establishments operated by Zambians. She examined two establishments operated by different tribes. During the study she spent many hours at each establishment and gained a detailed knowledge of the tribal leaders, gambling employees and gambling customers. She also investigated how the establishments were organized, their impact on economic development in the area and how tribal members saw them. She conducted:

- a. A case study
- b. A summative evaluation study
- c. A cohort study
- d. Action research

8. Which approach says that the purpose of research is to study the creation of social meaning?

- a. Positivism
- b. Interpretative Social Science
- c. Critical Social Science
- d. None of the above

9. In experimental design, the dependent variable is:

- a. The one that is manipulated and in which changes are observed
- b. The one that is not manipulated and in which changes are observed
- c. A measure of the extent to which personal values affect

d. An ambiguous concept whose meaning depends on how it is defined

10. What is a cross-sectional design?

- a. A study of particular section of society, e.g the middle classes
- b. One that is devised when the researcher is in a bad mood
- c. The collection of two or more variable over a long period of time

**Section B: Answer 4 Questions**

- 1. Why are epistemological consideration important in research
- 2. What are the main differences between epistemological and ontological considerations
- 3. Give an account of phases in research design
- 4. Outline two practical advantages to the researcher of using social surveys in social research
- 5. Define, compare and contrast the related concepts of anonymity and confidentiality
- 6. Define research methods and methodology. What is the key difference between them?
- 7. Define the theoretical framework and how significant is it to the design of the research proposal?

**Section C. Compulsory**

What constitutes a successful research proposal. Identify its elements in details.

**END OF EXAMINATION**

THE UNIVERSITY OF ZAMBIA

SCHOOL OF HUMANITIES AND SOCIAL SCIENCES

DEPARTMENT OF SOCIAL DEVELOPMENT STUDIES

SWK 3330: ANALYSIS OF SOCIAL WORK INTERVENTION METHODS

2018/2019 ACADEMIC YEAR

---

**TIME ALLOWED: 3 HOURS**

**INSTRUCTIONS:**

The paper has **FOUR** sections,

**SECTION A: Multiple choice answer ALL,**

**SECTION B: Provide short notes answer FIVE**

**SECTION C: Long essay COMPULSORY.**

**SECTION D: Answer TWO.**

---

**SECTION A: Answer all the questions. Each question carries 2 marks, Total = 20 marks.**

1. Which defense mechanism describes a person who does the opposite of what s/he feels, intends or prefers to do. For example, a woman who dislikes children may take up a job as a child minder in a child facility.

- A. Displacement
- B. Recreation formation
- C. Self-projection
- D. Substitution

2. According to Whittaker, which method/theory below describes human being as free agents who choose at will?

- A. Psychoanalytic
- B. Social learning
- C. Social systems
- D. Humanistic existential

3. Which one of the following is **NOT** a stage in teamwork operations?
- A. Orientation
  - B. Conflict
  - C. Negotiation
  - D. Dissolution
4. Which of the scholar below is described as the father of problem solving?
- A. Follet
  - B. Lewin
  - C. Dewey
  - D. Freud
5. Which scholar below was the first to make use of the phrase “**person and situation**” in social casework?
- A. Gordon Hamilton
  - B. Florence Hollis
  - C. Mary Richmond
  - D. Helen Harris Perlman
6. Which one of the following is **NOT** a purpose of case recording in social casework?
- A. Aids practice
  - B. Aids referrals
  - C. Aids supervision
  - D. Aids research
7. Which of the following functions of social casework is **NOT** mentioned by Perlman Harris in her sentence as she joins the **5 P**.
- A. Modify behavior
  - B. Self sufficient
  - C. Independent
  - D. Confidant
8. Which one of Freud’s concepts is related to reasoning, consciousness, and rational part of the personality; it monitors behavior in order to satisfy basic desires without suffering negative consequences?
- A. Id
  - B. superego
  - C. ego
  - D. subconscious
9. Which of the following problems does not belong to the group (**odd one out**)?
- A. Interpersonal
  - B. Relationship
  - C. Physiological
  - D. Economic

10. Which one of the following is **NOT** a Task group?

- A. Team
- B. Committee
- C. Support
- D. Social action

**SECTION B: Provide short notes on any five (5) concepts below (20 marks)**

1. Litwak's levels in problem solving **(4 marks)**
2. Transference and counter transference **(4 marks)**
3. Dual culturalism **(4 marks)**
4. Verbatim recording **(4 marks)**
5. Diagnosis **(4 marks)**
6. Catharsis **(4 marks)**

**SECTION C: COMPULSORY QUESTION**

1. Compare and contrast rational empirical theory and normative re-educative theory of Benne, Bennis and Chin (1985). Explain how each theory could be used to bring about change in any given community in Zambia. **(40 Marks)**

**SECTION D: ATTEMPT ANY TWO QUESTIONS**

2. A group like a living organism is born, grows and dies. Outline Tuckman and Jensen (1977) group development model and analyse how the application of psychodynamic theory in group work would enhance the achievement of group goals. **(20 Marks)**
3. Discuss the concept 'community development'. And bring out the benefits that come as a result of local people participating in developmental activities. **(20 Marks)**
4. Discuss an example of a traditional problem solving model of a particular tribe in Zambia as presented by Elizabeth Brooks and Vukani Nyirenda. **(20 Marks)**

**END OF EXAM**

**THE UNIVERSITY OF ZAMBIA**  
**SCHOOL OF HUMANITIES AND SOCIAL SCIENCES**  
**DEPARTMENT OF SOCIAL WORK AND SOCIOLOGY**

**2019/2020 ACADEMIC YEAR EXAMINATION**

**SWK 3330: ANALYSIS OF SOCIAL WORK INTERVENTION**  
**DURATION: THREE HOURS**

**INSTRUCTIONS:** This paper is divided into three sections. Section A is compulsory. Answer two (2) questions from Section B and four (4) from section C.

---

**SECTION A: Compulsory (30 Marks)**

1. Define the concept of planned change and elucidate the difference between rational-empirical and normative-reeducative strategies as meta-theories for implementing social service interventions.

**SECTION B: Answer two QUESTIONS (50 Marks)**

1. Provide an analysis of the relevance of Social Case Work as a method of Social Work intervention in Zambia.
2. With focus on Africa, discuss the assertion that social work is a product of professional imperialism. How can social work redeem itself from this assertion?
3. Discuss the concept of social development with focus on the definition, elements of the definition and services that should be implemented for realization of holistic social development. What role(s) do Social Workers play in promoting social development?

**SECTION C: Write brief notes on any four (4) of the following themes**

1. Elements of Social Actions (According to Talcott Parsons)
2. The Unfreeze Stage
3. Assumptions of the Power Coercive Model of Change
4. Locality Development
5. Major principles of Social Work Administration
6. Empowerment

**END OF EXAMINATION**



**THE UNIVERSITY OF ZAMBIA  
SCHOOL OF HUMANITIES AND SOCIAL SCIENCES  
DEPARTMENT OF SOCIAL WORK AND SOCIOLOGY**

**Social Planning and Administration (SWK 4110) Examination -  
2019/2020 Academic year**

---

**INSTRUCTIONS:**

1. Question 1 in section A is compulsory. Choose any other two questions from section B
2. Indicate clearly in your answer booklet the questions you have answered
3. Time allowed: Three hours

**SECTION. A: COMPULSORY**

**Question.1**

Delve deeper into the following policy frameworks and draw fifteen (15) policy implications for social planning and social administration at all levels in multi-level structure for social planning and social administration:

- (i) African Union Agenda 2063
- (ii) Zambia's 2030 Vision

(iii) Sustainable Development Goals (SDGs) (20 Marks).

**SECTION.B: CHOOSE ONLY TWO QUESTIONS**

**Question.2**

With practical socio-economic development examples, Identify and discuss any five (5) social planning models that inform social administration in the first, second and third sectors (15 Marks).

**Question.3**

“Current cases of indiscipline in the public service in Zambia can be addressed by implementing the tenets of Code of Ethics for Public Service and Principles of Scientific Management. With practical examples, explain how you can plan and implement the tenets of Code of Ethics and Principles of Scientific Management in the Public Service (15 Marks).

**Question. 4**

“The Theory of Departmentalization is important in social planning and social administration in the second and third sectors. However, the theory is not relevant to the first sector and United Nations Specialized Agencies. This is because social planning and social administration theories are more applicable to the second and third sectors”. How valid is this statement? **(15 Marks)**

**Question 5**

With examples, explain how you can plan and settle collective disputes in a formal organization using Zambia’s Industrial Relations and Labour Act of 1997. Which labour rights are being promoted and protected by the act? Justify your arguments **(15 Marks)**.

**END OF EXAMINATION**

**THE UNIVERSITY OF ZAMBIA**  
**SCHOOL OF HUMANITIES AND SOCIAL SCIENCES**  
**SOCIAL WORK AND SOCIOLOGY DEPT**  
**2019/2020 ACADEMIC YEAR**  
**DEFERRED EXAMINATION**

**SWK 4310: SOCIAL WORK PRACTICE WITH CHILDREN AND FAMILIES**

**TIME: THREE HOURS**

**INSTRUCTIONS: THERE ARE TWO SECTIONS IN THIS EXAMINATION. READ INSTRUCTIONS IN EACH SECTION.**

**SECTION A: COMPULSORY (40 MARKS)**

1. a. Discuss the process of reintegration of a child with the family, who has been living in the streets. **(30 MARKS)**
- b. Write short notes on **FOUR** fundamental principles of the UNCRC. **(10 MARKS)**

**SECTION B: ATTEMPT ANY OF THE THREE QUESTIONS (60 MARKS)**

2. Discuss the assertion that 'childhood' is a social construct. Further highlight its implication in relation to child abuse. **(20 MARKS)**
3. As a child protection expert, you have been invited to present a paper on the multiple ways of bringing up children. Prepare your presentation with a child rights perspective in mind. **(20 MARKS)**
4. You collected data in Lusaka concerning children participation in different kinds of events. Analyse your data by using a well-known framework in child protection to bring out ways in which the use of children in events was appropriate or inappropriate. **(20 MARKS)**
5. Provide a situational analysis of gender based violence in Zambia. Highlight causes, effects and strategies to end it. **(20 MARKS)**

**END OF EXAMINATION**

THE UNIVERSITY OF ZAMBIA

2019/2020 FINAL EXAMINATIONS - NOVEMBER 2020

SWK4211: MONITORING AND EVALUATION RESEARCH

TIME ALLOWED: THREE HOURS

INSTRUCTIONS: 1. Answer (all) the two questions in Section 1.  
2. From Section II, answer any combination of 2 questions.

---

**SECTION I: COMPULSORY- ANSWER ALL QUESTIONS. (50 MARKS)**

**Scenario for Section I:**

You are the Deputy Director in charge of Monitoring and Evaluation (DDM&E) in the Ministry of Community Development and Social Welfare. Cabinet Office has issued a memo instructing all government departments to align their sector M&E Plans to the national M&E Framework for the Seventh National Development Plan. You are holding a workshop as a ministry to respond to the instruction by Cabinet Office.

**Questions:**

1. Explain to your members of staff attending the workshop the importance and condition for realising an effective M&E System for your Ministry. (25 marks)
2. Define the terms data and data quality and clarify the importance of observing the key elements of data quality in the programmes your ministry is implementing. (25 marks)

**SECTION II: ANSWER ANY 2 QUESTIONS. (50 MARKS)**

**Case Description for Section II:**

Curbing under-five malnutrition remains one of Zambia's vexing problems due to the multiplicity of causal factors. You have been appointed the Chief Technical Advisor (Planning, Monitoring and Evaluation) for a five-year multi-sectoral programme funded by GRZ and UNICEF to address malnutrition among under-five children in the country. The programme activities or projects will be implemented by various government departments and a consortium of NGOs. You will need to hold several planning workshops to achieve a comprehensive, coherent and manageable programme.

**Questions:**

3. Conceive the elements that would constitute the programme and draw up and a results framework for the programme. (25 marks)
4. Explain to the implementing partners the necessity for each organisation to have an effective monitoring and evaluation system and the conditions that can help them achieve that. (25 marks)
5. Recall the steps in setting up an effective M&E system and illustrate what you anticipate will be the challenges for achieving one for the overall programme. (25 marks)
6. What monitoring and evaluation framework do you recommend the implementing partners to use in the monitoring and evaluation of their respective projects and explain the factors that have caused you to prefer that framework? (25 marks)

**END OF EXAMINATION**

THE UNIVERSITY OF ZAMBIA

END-YEAR EXAMINATIONS FOR 2019/20 ACADEMIC YEAR

SWK9120: PROJECT MANAGEMENT

TIME ALLOWED: THREE HOURS

INSTRUCTIONS:

1. Read and understand the project description given below before you proceed in answering the examination questions.
  2. Answer all questions in Section I.
  3. Answer any three (3) questions from Section II.
- 

**PROJECT DESCRIPTION:**

Climate change – a term that denotes global warming and its effects – has been a buzzword in Zambia for the last few months. Politicians have focused on the negative risks that come with this phenomenon such as increased temperatures and a reduction in the average rainfall in Zambia consequently leading to load shedding. Nonetheless, some experts at the University of Zambia have noted that high temperatures also come with positive risks especially for institutions like ZESCO which are implementing projects to scale up electricity production to 6000 megawatts by 2030.

**SECTION I: ALL QUESTIONS ARE COMPULSORY. (25 MARKS)**

1. Explain to ZESCO management what a positive risk is? (5 Marks)
2. Elaborate to ZESCO management the four strategies they can use to respond to risks with potentially positive impacts on their project of scaling up electricity generation. (20 Marks)

**SECTION II: ANSWER THREE QUESTIONS ONLY. (75 MARKS)**

3. Graham 1985 defines a project as a “a set of people and other resources temporarily assembled to reach a specified objective, normally with a fixed

budget and with a fixed time period” Identify and discuss 5 characteristics of a project (25 Marks)

4. Write brief notes on the following concepts
  - a. Task environment
  - b. External environment
  - c. General environment
  - d. Project Charter
  - e. Gantt Chart
  
5. The environment in which projects operate may be summarized by the 5C model. Explain what the 5Cs are (20 Marks) and illustrate the acronym that stands for the constituent elements of the first C (5 marks).
  
6. What is the 7S framework? List and discuss the 7S used in management (25 Marks)

**END OF EXAMINATION**

THE UNIVERSITY OF ZAMBIA

END-YEAR EXAMINATIONS FOR 2019/20 ACADEMIC YEAR

SWK9120: PROJECT MANAGEMENT

Cohort 2

TIME ALLOWED: THREE HOURS

INSTRUCTIONS:

1. Read and understand the project description given below before you proceed in answering the examination questions.
  2. Answer all questions in Section I.
  3. Answer any two (2) questions from Section II.
- 

**SECTION I: ALL QUESTIONS ARE COMPULSORY. (50 MARKS)**

1. Graham 1985 defines a project as a “a set of people and other resources temporarily assembled to reach a specified objective, normally with a fixed budget and with a fixed time period” Identify and discuss 5 characteristics of a project (25 Marks)
2. The environment in which projects operate may be summarized by the 5C model. Explain what the 5Cs are (20 Marks) and illustrate the acronym that stands for the constituent elements of the first C (5 marks).

**SECTION II: ANSWER TWO QUESTIONS ONLY. (50 MARKS)**

**PROJECT DESCRIPTION:**

Climate change – a term that denotes global warming and its effects – has been a buzzword in Zambia for the last few months. Politicians have focused on the negative risks that come with this phenomenon such as increased temperatures and a reduction in the average rainfall in Zambia consequently leading to load shedding. Nonetheless, some experts at the University of Zambia have noted that high temperatures also come with positive risks especially for institutions like

ZESCO which are implementing projects to scale up electricity production to 6000 megawatts by 2030.

3. Explain to ZESCO management what a positive risk is? (5 Marks)
4. Elaborate to ZESCO management the four strategies they can use to respond to risks with potentially positive impacts on their project of scaling up electricity generation. (20 Marks)
5. Write brief notes on the following concepts
  - a. Task environment
  - b. External environment
  - c. General environment
  - d. Project Charter
  - e. Gantt Chart
6. What is the 7S framework? List and discuss the 7S used in management (25 Marks)
7. Implementing a policy framework that balances the interests of investors, the government, miners, local communities and the environment has remained a challenge for the Zambian government. Choose the appropriate framework from among the ICOM, 5C model and PESTEL and use it to analyse the mining sector investment. Explain the acronym and use it to illustrate the answer (25 Marks)

**END OF EXAMINATION**



THE UNIVERSITY OF ZAMBIA  
SCHOOL OF HUMANITIES AND SOCIAL SCIENCES  
DEPARTMENT OF SOCIAL WORK AND SOCIOLOGY  
2019/2020 END OF YEAR EXAMINATIONS

SWK 9315- SOCIAL WORK, DISABILITY AND MENTAL HEALTH

INSTRUCTIONS: READ CAREFULLY THE INSTRUCTIONS IN EACH SECTION

TIME: 3 HOURS

VENUE: SPORTS HALL

.....  
**SECTION A: COMPULSORY QUESTION**

**QUESTION 1:**

With relevant examples, discuss the **rationale** for investing in mental health. (20 Marks)

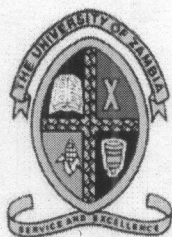
**SECTION B: ANSWER BOTH QUESTIONS (20 Marks)**

1. What is the importance of Social Work practice in disability and mental health?
2. What Skills are required for a Disability Social Worker?

**SECTION C: WRITE ON ANY TWO (2) OF THE FOLLOWING: (20 Marks)**

- (a) Mental health theories
- (b) Life course approach to disability
- (c) List and explain 5 (five) mental health problems/disorders and their characteristics.

~END OF EXAMINATION~



**THE UNIVERSITY OF ZAMBIA  
SCHOOL OF HUMANITIES AND SOCIAL SCIENCES  
DEPARTMENT OF SOCIAL WORK AND SOCIOLOGY  
2019/2020 END OF YEAR EXAMINATIONS**

**SWK 9315- SOCIAL WORK, DISABILITY AND MENTAL HEALTH**

**INSTRUCTIONS: READ CAREFULLY THE INSTRUCTIONS IN EACH SECTION**

**VENUE: LT2**

**TIME: 3 HOURS**

.....  
**SECTION A: COMPULSORY QUESTION**

'Inclusion and Participation' of persons with disabilities and mental health disorders is cardinal in securing their human rights. Discuss this statement with relevant examples in the Zambian context. **(20 Marks)**

**SECTION B: ANSWER TWO (2) QUESTIONS ONLY- (40 MARKS)**

1. Types of physical disabilities and their causes.
2. Using your knowledge of disability and mental health issues, discuss the causal factors of psychosocial disabilities in Zambia.
3. Explain the role of Social Workers in adult mental health services and in-patient settings.
4. Approaches to disability and their implications on treatment and care for persons with disabilities in Zambian society.
5. Historical perspective of mental health disorders in developed and developing countries and its impact on persons with mental health disorders.

**END OF EXAMINATION.**